

A21596

Leader in Biomolecular Solutions for Life Science



PCIF1 Rabbit pAb

Catalog No.: A21596

Basic Information

Observed MW

Refer to figures

Calculated MW

81kDa

Category

Polyclonal Antibody

Applications

WB,IHC-P,IP,ELISA

Cross-Reactivity

Human,Mouse,Rat

Background

Enables RNA polymerase II C-terminal domain phosphoserine binding activity; S-adenosyl-L-methionine binding activity; and mRNA (2'-O-methyladenosine-N6-)-methyltransferase activity. Involved in mRNA methylation; negative regulation of translation; and positive regulation of translation. Located in intercellular bridge; microtubule cytoskeleton; and nucleoplasm.

Recommended Dilutions

WB 1:500 - 1:2000

IHC-P 1:50 - 1:100

IP 0.5µg-4µg antibody for
200µg-400µg extracts
of whole cells

ELISA Recommended starting
concentration is 1
µg/mL. Please optimize
the concentration
based on your specific
assay requirements.

Immunogen Information

Gene ID

63935

Swiss Prot

Q9H4Z3

Immunogen

Recombinant fusion protein containing a sequence corresponding to amino acids 1-200 of human PCIF1 (NP_071387.1).

Synonyms

CAPAM; hCAPAM; hPCIF1; C20orf67; PPP1R121; PCIF1

Product Information

Source

Rabbit

Isotype

IgG

Purification

Affinity purification

Storage

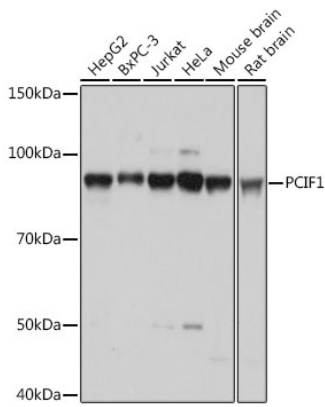
Store at -20°C. Avoid freeze / thaw cycles.

Buffer: PBS with 0.05% proclin300,50% glycerol,pH7.3.

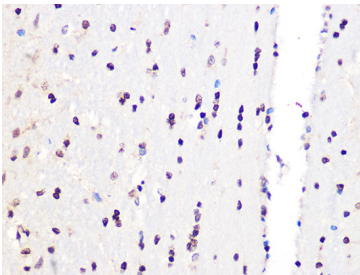
Contact

 www.abclonal.com

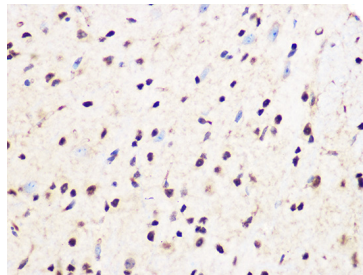
Validation Data



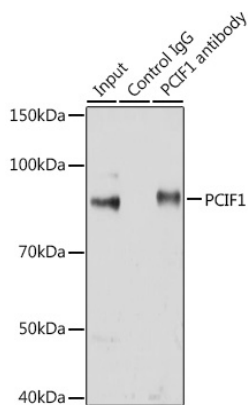
Western blot analysis of various lysates using PCIF1 Rabbit pAb (A21596) at 1:1000 dilution.
Secondary antibody: HRP-conjugated Goat anti-Rabbit IgG (H+L) (AS014) at 1:10000 dilution.
Lysates/proteins: 25µg per lane.
Blocking buffer: 3% nonfat dry milk in TBST.
Detection: ECL Basic Kit (RM00020).
Exposure time: 1s.



Immunohistochemistry analysis of paraffin-embedded Rat brain using PCIF1 Rabbit pAb (A21596) at dilution of 1:100 (40x lens).
Microwave antigen retrieval performed with 0.01M Tris/EDTA Buffer (pH 9.0) prior to IHC staining.



Immunohistochemistry analysis of paraffin-embedded Mouse spinal cord using PCIF1 Rabbit pAb (A21596) at dilution of 1:100 (40x lens).
Microwave antigen retrieval performed with 0.01M Tris/EDTA Buffer (pH 9.0) prior to IHC staining.



Immunoprecipitation analysis of 200 µg extracts of Jurkat cells using 3 µg PCIF1 antibody (A21596). Western blot was performed from the immunoprecipitate using PCIF1 antibody (A21596) at a dilution of 1:1000.