

A21590

Leader in Biomolecular Solutions for Life Science



# RCN1 Rabbit pAb

Catalog No.: A21590

## Basic Information

---

### Observed MW

Refer to figures

### Calculated MW

39kDa

### Category

Polyclonal Antibody

### Applications

WB,IF/ICC,ELISA

### Cross-Reactivity

Human,Mouse

## Background

---

Reticulocalbin 1 is a calcium-binding protein located in the lumen of the ER. The protein contains six conserved regions with similarity to a high affinity Ca(+2)-binding motif, the EF-hand. High conservation of amino acid residues outside of these motifs, in comparison to mouse reticulocalbin, is consistent with a possible biochemical function besides that of calcium binding. In human endothelial and prostate cancer cell lines this protein localizes to the plasma membrane.

## Recommended Dilutions

---

WB	1:500 - 1:2000
IF/ICC	1:50 - 1:200

## Immunogen Information

---

### Gene ID

5954

### Swiss Prot

Q15293

### Immunogen

Recombinant fusion protein containing a sequence corresponding to amino acids 30-331 of human RCN1 (NP\_002892.1).

### Synonyms

RCN; RCAL; PIG20; HEL-S-84; RCN1

## Contact

---



[www.abclonal.com](http://www.abclonal.com)

## Product Information

---

### Source

Rabbit

### Isotype

IgG

### Purification

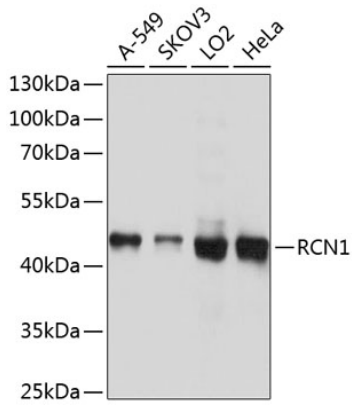
Affinity purification

### Storage

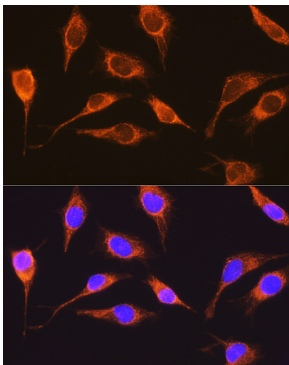
Store at -20°C. Avoid freeze / thaw cycles.

Buffer: PBS with 0.01% thimerosal,50% glycerol,pH7.3.

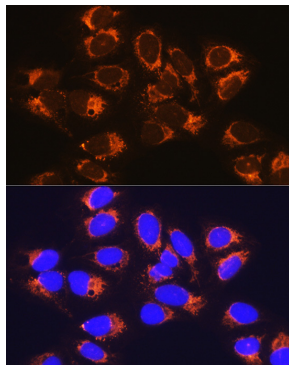
## Validation Data



Western blot analysis of various lysates using RCN1 Rabbit pAb (A21590) at 1:1000 dilution. Secondary antibody: HRP Goat Anti-Rabbit IgG (H+L) (AS014) at 1:10000 dilution. Lysates/proteins: 25µg per lane. Blocking buffer: 3% nonfat dry milk in TBST. Detection: ECL Basic Kit (RM00020). Exposure time: 1s.



Immunofluorescence analysis of L929 cells using RCN1 Rabbit pAb (A21590) at dilution of 1:100 (40x lens). Secondary antibody: Cy3 Goat Anti-Rabbit IgG (H+L) (AS007) at 1:500 dilution. Blue: DAPI for nuclear staining.



Immunofluorescence analysis of U-2 OS cells using RCN1 Rabbit pAb (A21590) at dilution of 1:100 (40x lens). Secondary antibody: Cy3 Goat Anti-Rabbit IgG (H+L) (AS007) at 1:500 dilution. Blue: DAPI for nuclear staining.