

A21543

Leader in Biomolecular Solutions for Life Science



## PIK3C2A Rabbit pAb

Catalog No.: A21543

### Basic Information

#### Observed MW

Refer to figures

#### Calculated MW

191kDa

#### Category

Polyclonal Antibody

#### Applications

WB,IHC-P,IF/ICC,IP,ELISA

#### Cross-Reactivity

Human,Mouse,Rat

### Background

The protein encoded by this gene belongs to the phosphoinositide 3-kinase (PI3K) family. PI3-kinases play roles in signaling pathways involved in cell proliferation, oncogenic transformation, cell survival, cell migration, and intracellular protein trafficking. This protein contains a lipid kinase catalytic domain as well as a C-terminal C2 domain, a characteristic of class II PI3-kinases. C2 domains act as calcium-dependent phospholipid binding motifs that mediate translocation of proteins to membranes, and may also mediate protein-protein interactions. The PI3-kinase activity of this protein is not sensitive to nanomolar levels of the inhibitor wortmanin. This protein was shown to be able to be activated by insulin and may be involved in integrin-dependent signaling.

### Recommended Dilutions

<b>WB</b>	1:500 - 1:2000
<b>IHC-P</b>	1:50 - 1:200
<b>IF/ICC</b>	1:50 - 1:200
<b>IP</b>	0.5µg-4µg antibody for 200µg-400µg extracts of whole cells

### Contact

 [www.abclonal.com](http://www.abclonal.com)

### Immunogen Information

<b>Gene ID</b>	<b>Swiss Prot</b>
5286	O00443

#### Immunogen

Recombinant fusion protein containing a sequence corresponding to amino acids 1-200 of human PIK3C2A (NP\_002636.2).

#### Synonyms

CPK; OCSKD; PI3-K-C2A; PI3K-C2alpha; PI3K-C2-alpha; PI3-K-C2(ALPHA); PIK3C2A

### Product Information

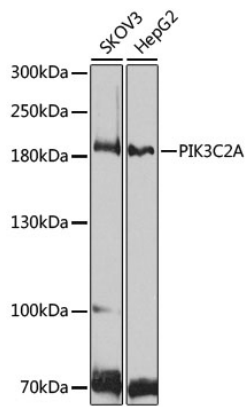
<b>Source</b>	<b>Isotype</b>	<b>Purification</b>
Rabbit	IgG	Affinity purification

#### Storage

Store at -20°C. Avoid freeze / thaw cycles.

Buffer: PBS with 0.02% sodium azide,50% glycerol,pH7.3.

## Validation Data



Western blot analysis of various lysates using PIK3C2A Rabbit pAb (A21543) at 1:1000 dilution.

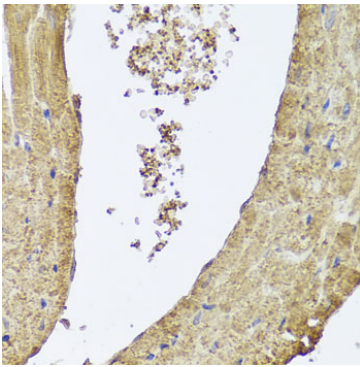
Secondary antibody: HRP Goat Anti-Rabbit IgG (H+L) (AS014) at 1:10000 dilution.

Lysates/proteins: 25µg per lane.

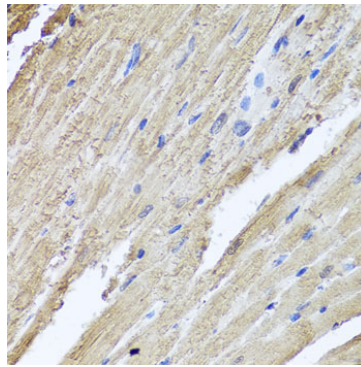
Blocking buffer: 3% nonfat dry milk in TBST.

Detection: ECL Basic Kit (RM00020).

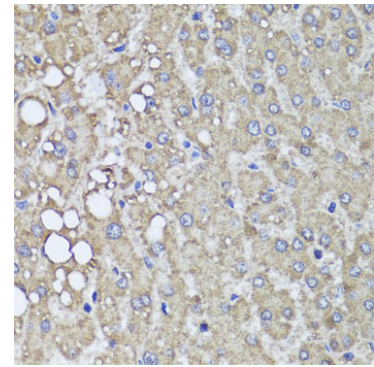
Exposure time: 90s.



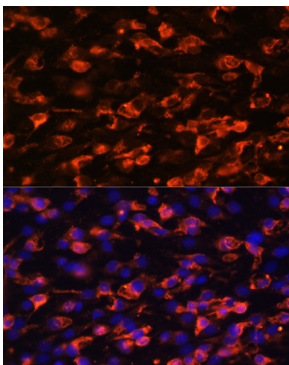
Immunohistochemistry analysis of paraffin-embedded mouse heart using PIK3C2A Rabbit pAb (A21543) at dilution of 1:100 (40x lens). Perform microwave antigen retrieval with 10 mM PBS buffer pH 7.2 before commencing with IHC staining protocol.



Immunohistochemistry analysis of paraffin-embedded rat heart using PIK3C2A Rabbit pAb (A21543) at dilution of 1:100 (40x lens). Perform microwave antigen retrieval with 10 mM PBS buffer pH 7.2 before commencing with IHC staining protocol.



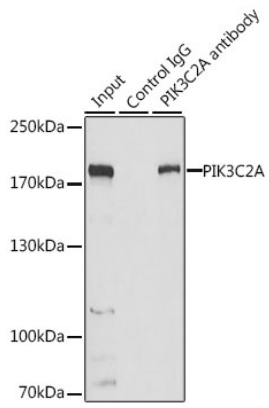
Immunohistochemistry analysis of paraffin-embedded human liver damage using PIK3C2A Rabbit pAb (A21543) at dilution of 1:100 (40x lens). Perform microwave antigen retrieval with 10 mM PBS buffer pH 7.2 before commencing with IHC staining protocol.



Immunofluorescence analysis of C6 cells using PIK3C2A Rabbit pAb (A21543) at dilution of 1:100. Secondary antibody: Cy3 Goat Anti-Rabbit IgG (H+L) (AS007) at 1:500 dilution. Blue: DAPI for nuclear staining.

## Validation Data

---



Immunoprecipitation analysis of 200  $\mu$ g extracts of HeLa cells, using 3  $\mu$ g PIK3C2A antibody (A21543). Western blot was performed from the immunoprecipitate using PIK3C2A antibody (A21543) at a dilution of 1:1000.