

A2150

Leader in Biomolecular Solutions for Life Science



PIWIL1 Rabbit pAb

Catalog No.: A2150 **6 Publications**

Basic Information

Observed MW

90kDa

Calculated MW

99kDa

Category

Polyclonal Antibody

Applications

WB,IHC-P,IF/ICC,ELISA

Cross-Reactivity

Human,Mouse,Rat

Background

Enables several functions, including RNA binding activity; mRNA cap binding complex binding activity; and polysome binding activity. Involved in negative regulation of transposition; piRNA metabolic process; and spermatogenesis, exchange of chromosomal proteins. Located in chromatoid body; dense body; and nucleus. Is expressed in genitourinary system. Orthologous to human PIWIL1 (piwi like RNA-mediated gene silencing 1).

Recommended Dilutions

WB 1:500 - 1:1000

IHC-P 1:50 - 1:200

IF/ICC 1:50 - 1:200

ELISA Recommended starting concentration is 1 µg/mL. Please optimize the concentration based on your specific assay requirements.

Immunogen Information

Gene ID

57749

Swiss Prot

Q9JMB7

Immunogen

Recombinant fusion protein containing a sequence corresponding to amino acids 1-160 of mouse PIWIL1 (NP_067286.1).

Synonyms

MIWI; PIWIL1

Contact



www.abclonal.com

Product Information

Source

Rabbit

Isotype

IgG

Purification

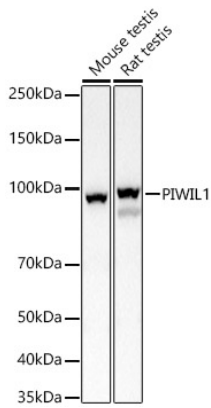
Affinity purification

Storage

Store at -20°C. Avoid freeze / thaw cycles.

Buffer: PBS with 0.02% sodium azide,50% glycerol,pH7.3.

Validation Data



Western blot analysis of various lysates, using PIWIL1 Rabbit pAb (A2150) at 1:500 dilution.

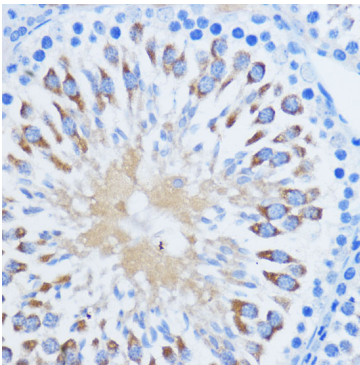
Secondary antibody: HRP-conjugated Goat anti-Rabbit IgG (H+L) (AS014) at 1:10000 dilution.

Lysates/proteins: 25µg per lane.

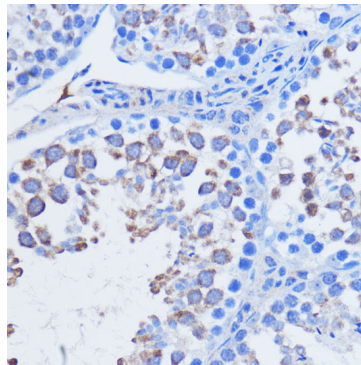
Blocking buffer: 3% nonfat dry milk in TBST.

Detection: ECL Basic Kit (RM00020).

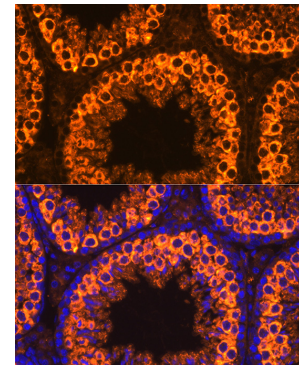
Exposure time: 1s.



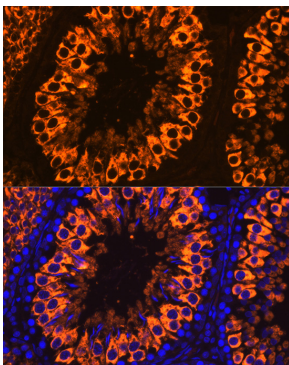
Immunohistochemistry analysis of paraffin-embedded Rat testis using PIWIL1 Rabbit pAb (A2150) at dilution of 1:100 (40x lens). Microwave antigen retrieval performed with 0.01M PBS Buffer (pH 7.2) prior to IHC staining.



Immunohistochemistry analysis of paraffin-embedded Mouse testis using PIWIL1 Rabbit pAb (A2150) at dilution of 1:100 (40x lens). Microwave antigen retrieval performed with 0.01M PBS Buffer (pH 7.2) prior to IHC staining.



Immunofluorescence analysis of paraffin-embedded Mouse testis using PIWIL1 Rabbit pAb (A2150) at dilution of 1:100. Secondary antibody: Cy3-conjugated Goat anti-Rabbit IgG (H+L) (AS007) at 1:500 dilution. Blue: DAPI for nuclear staining.



Immunofluorescence analysis of paraffin-embedded Rat testis using PIWIL1 Rabbit pAb (A2150) at dilution of 1:100. Secondary antibody: Cy3-conjugated Goat anti-Rabbit IgG (H+L) (AS007) at 1:500 dilution. Blue: DAPI for nuclear staining.