

A21471

Leader in Biomolecular Solutions for Life Science



IP3R Rabbit pAb

Catalog No.: A21471

3 Publications

Basic Information

Observed MW

320kDa/

Calculated MW

314kDa

Category

Polyclonal Antibody

Applications

WB,IP,ELISA,IF-P

Cross-Reactivity

Human,Mouse,Rat

Background

This gene encodes an intracellular receptor for inositol 1,4,5-trisphosphate. Upon stimulation by inositol 1,4,5-trisphosphate, this receptor mediates calcium release from the endoplasmic reticulum. Mutations in this gene cause spinocerebellar ataxia type 15, a disease associated with an heterogeneous group of cerebellar disorders. Multiple transcript variants have been identified for this gene.

Recommended Dilutions

WB 1:1000 - 1:5000

IP 0.5ug-4ug antibody for
400ug-600ug extracts
of whole cells

IF-P 1:50 - 1:200

ELISA Recommended starting
concentration is 1
μg/mL. Please optimize
the concentration
based on your specific
assay requirements.

Contact



www.abclonal.com

Immunogen Information

Gene ID

3708

Swiss Prot

Q14643

Immunogen

Synthetic peptide. This information is considered to be commercially sensitive.

Synonyms

ACV; CLA4; IP3R; IP3R1; SCA15; SCA16; SCA29; INSP3R1; PPP1R94

Product Information

Source

Rabbit

Isotype

IgG

Purification

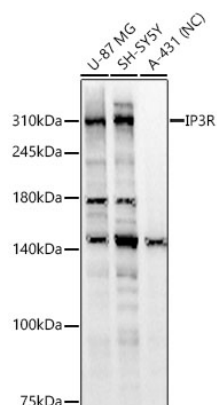
Affinity purification

Storage

Store at -20°C. Avoid freeze / thaw cycles.

Buffer: PBS containing 50% glycerol, preserved with proclin300 or sodium azide (as specified on the Certificate of Analysis), pH 7.3.

Validation Data



Western blot analysis of various lysates using IP3R Rabbit pAb (A21471) at 1:2000 dilution.

Secondary antibody: HRP-conjugated Goat anti-Rabbit IgG (H+L) (AS014) at 1:10000 dilution.

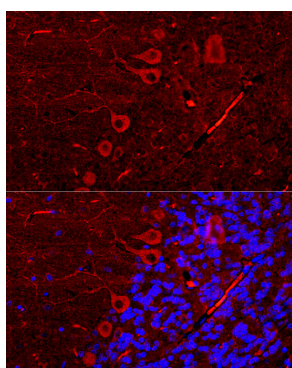
Lysates/proteins: 25 µg per lane.

Blocking buffer: 3% nonfat dry milk in TBST.

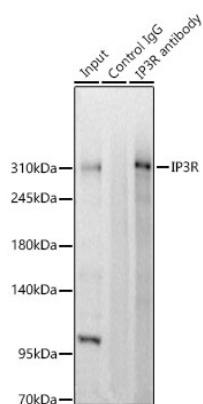
Detection: ECL Basic Kit (RM00020).

Negative control (NC): A-431.

Exposure time: 10s.



Perform microwave antigen retrieval with 10 mM citrate buffer pH 6.0 before commencing with IF staining protocol. Immunofluorescence analysis of paraffin-embedded Rat Brain using IP3R Rabbit pAb (A21471) at dilution of 1:200 (40x lens). Secondary antibody: Cy3-conjugated Goat anti-Rabbit IgG (H+L) (AS007) at 1:500 dilution. Blue: DAPI for nuclear staining.



Immunoprecipitation of IP3R from 500 µg extracts of SH-SY5Y cells was performed using 2 µg of IP3R Rabbit pAb (A21471). Rabbit IgG isotype control (AC042) was used to precipitate the Control IgG sample. IP samples were eluted with 1X Laemmli Buffer. The Input lane represents 10% of the total input. Western blot analysis of immunoprecipitates was conducted using IP3R Rabbit pAb (A21471) at a dilution of 1:2500.