

A21452

Leader in Biomolecular Solutions for Life Science



Heme Oxygenase 1 (HO-1/HMOX1) Rabbit pAb

Catalog No.: A21452

Basic Information

Observed MW

33kDa/

Calculated MW

33kDa

Category

Polyclonal Antibody

Applications

WB,IF/ICC,ELISA

Cross-Reactivity

Human,Mouse,Rat

Background

Heme oxygenase, an essential enzyme in heme catabolism, cleaves heme to form biliverdin, which is subsequently converted to bilirubin by biliverdin reductase, and carbon monoxide, a putative neurotransmitter. Heme oxygenase activity is induced by its substrate heme and by various nonheme substances. Heme oxygenase occurs as 2 isozymes, an inducible heme oxygenase-1 and a constitutive heme oxygenase-2. HMOX1 and HMOX2 belong to the heme oxygenase family.

Recommended Dilutions

WB 1:500 - 1:1000

IF/ICC 1:50 - 1:200

ELISA Recommended starting concentration is 1 µg/mL. Please optimize the concentration based on your specific assay requirements.

Immunogen Information

Gene ID

3162

Swiss Prot

P09601

Immunogen

Recombinant fusion protein containing a sequence corresponding to amino acids 1-288 of human Heme Oxygenase 1 (HO-1/HMOX1) (NP_002124.1).

Synonyms

HO-1; HSP32; HMOX1D; bK286B10; Heme Oxygenase 1 (HO-1/HMOX1)

Contact



www.abclonal.com

Product Information

Source

Rabbit

Isotype

IgG

Purification

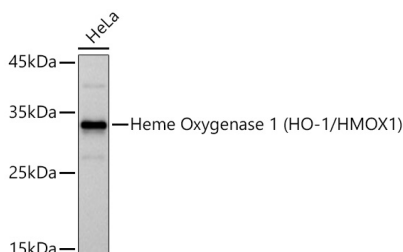
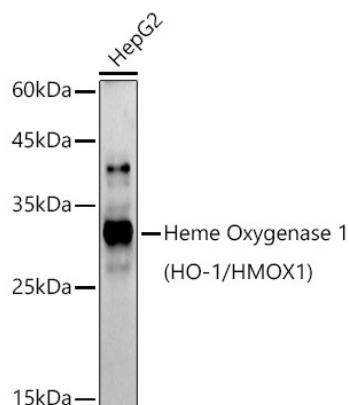
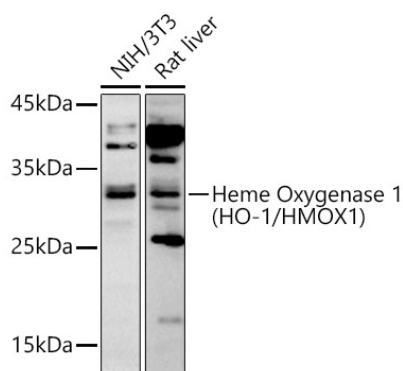
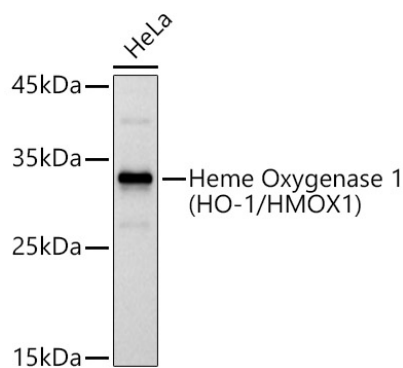
Affinity purification

Storage

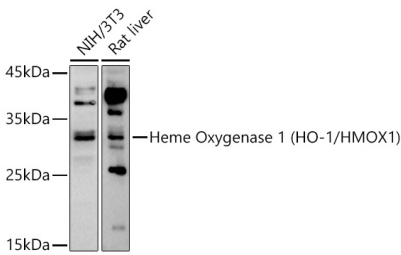
Store at -20°C. Avoid freeze / thaw cycles.

Buffer: PBS with 0.05% proclin300,50% glycerol,pH7.3.

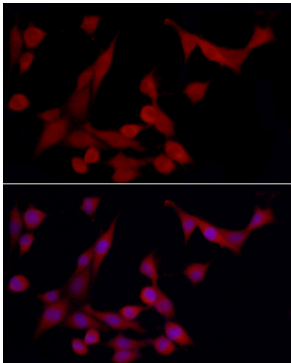
Validation Data



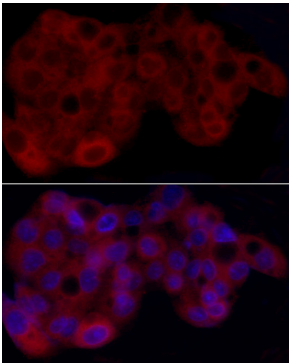
Validation Data



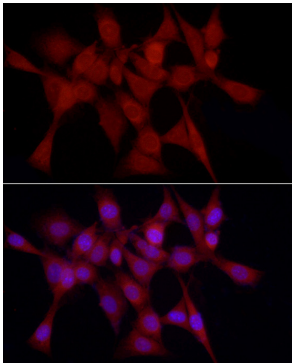
Western blot analysis of various lysates using Heme Oxygenase 1 (HO-1/HMOX1) Rabbit pAb (A21452) at 1:1000 dilution .
Secondary antibody: HRP-conjugated Goat anti-Rabbit IgG (H+L) (AS014) at 1:10000 dilution.
Lysates/proteins: µg per lane.
Blocking buffer: 3% nonfat dry milk in TBST.
Detection: ECL Basic Kit (RM00020).
Exposure time: 90ss.



Immunofluorescence analysis of PC-12 using Heme Oxygenase 1 (HO-1/HMOX1) Rabbit pAb (A21452) at dilution of 1 : 50 (40x lens). Blue: DAPI for nuclear staining.



Immunofluorescence analysis of HepG2 using Heme Oxygenase 1 (HO-1/HMOX1) Rabbit pAb (A21452) at dilution of 1 : 50 (40x lens). Blue: DAPI for nuclear staining.



Immunofluorescence analysis of NIH-3T3 using Heme Oxygenase 1 (HO-1/HMOX1) Rabbit pAb (A21452) at dilution of 1 : 50 (40x lens). Blue: DAPI for nuclear staining.