

A21276

Leader in Biomolecular Solutions for Life Science



TIR1 Rabbit pAb

Catalog No.: A21276

Basic Information

Observed MW

67kDa

Calculated MW

67kDa

Category

Polyclonal Antibody

Applications

WB, ELISA

Cross-Reactivity

Arabidopsis thaliana

Background

Encodes an auxin receptor that mediates auxin-regulated transcription. It contains leucine-rich repeats and an F-box and interacts with ASK1, ASK2 and AtCUL1 to form SCF-TIR1, an SCF ubiquitin ligase complex. Related to yeast Grr1p and human SKP2 proteins, involved in ubiquitin-mediated processes. Required for normal response to auxin and repressed in response to flagellin. As part of the SCF complex and in the presence of auxin, TIR1 interacts with Aux/IAA transcriptional repressor proteins and mediates their degradation. Mutations in TIR1 block auxin stimulation of flavonoid synthesis.

Recommended Dilutions

WB 1:500 - 1:1000

ELISA Recommended starting concentration is 1 µg/mL. Please optimize the concentration based on your specific assay requirements.

Immunogen Information

Gene ID

825473

Swiss Prot

Q570C0

Immunogen

Synthetic peptide. This information is considered to be commercially sensitive.

Synonyms

AtTIR1; TRANSPORT INHIBITOR RESPONSE 1; TIR1

Contact



www.abclonal.com

Product Information

Source

Rabbit

Isotype

IgG

Purification

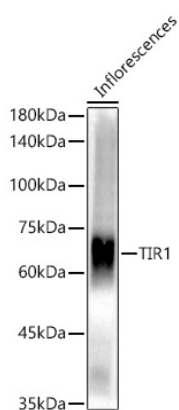
Affinity purification

Storage

Store at -20°C. Avoid freeze / thaw cycles.

Buffer: PBS containing 50% glycerol, preserved with proclin300 or sodium azide (as specified on the Certificate of Analysis), pH 7.3.

Validation Data



Western blot analysis of lysates from Inflorescences, using TIR1 Rabbit pAb (A21276) at 1:1000 dilution.

Secondary antibody: HRP-conjugated Goat anti-Rabbit IgG (H+L) (AS014) at 1:10000 dilution.

Lysates/proteins: 25µg per lane.

Blocking buffer: 3% nonfat dry milk in TBST.

Detection: ECL Basic Kit (RM00020).

Exposure time: 60s.