

A21237

Leader in Biomolecular Solutions for Life Science



CLCN1 Rabbit mAb

Catalog No.: A21237

Recombinant

Basic Information

Observed MW

109kDa

Calculated MW

109kDa

Category

SMab Recombinant Monoclonal
Antibody

Applications

WB,ELISA

Cross-Reactivity

Human

CloneNo number

ARC52491

Background

The CLCN family of voltage-dependent chloride channel genes comprises nine members (CLCN1-7, Ka and Kb) which demonstrate quite diverse functional characteristics while sharing significant sequence homology. The protein encoded by this gene regulates the electric excitability of the skeletal muscle membrane. Mutations in this gene cause two forms of inherited human muscle disorders: recessive generalized myotonia congenita (Becker) and dominant myotonia (Thomsen). Alternative splicing results in multiple transcript variants.

Recommended Dilutions

WB 1:2000 - 1:20000

Immunogen Information

Gene ID

1180

Swiss Prot

P35523

Immunogen

A synthetic peptide corresponding to a sequence within amino acids 889-988 of human CLCN1 (NP_000074.3).

Synonyms

CLC1; CLCN1

Contact



www.abclonal.com

Product Information

Source

Rabbit

Isotype

IgG

Purification

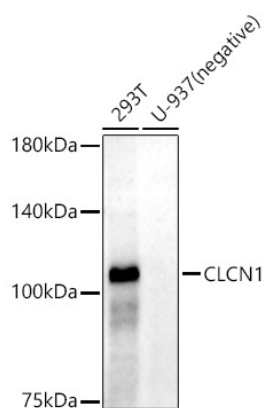
Affinity purification

Storage

Store at -20°C. Avoid freeze / thaw cycles.

Buffer: PBS with 0.05% proclin300,0.05% BSA,50% glycerol,pH7.3.

Validation Data



Western blot analysis of various lysates, using CLCN1 antibody (A21237) at 1:20000 dilution.

Secondary antibody: HRP Goat Anti-Rabbit IgG (H+L) (AS014) at 1:10000 dilution.

Lysates/proteins: 25µg per lane.

Blocking buffer: 3% nonfat dry milk in TBST.

Detection: ECL Enhanced Kit (RM00021).

Exposure time: 60s.