

A21229

Leader in Biomolecular Solutions for Life Science



NY-ESO-1 Rabbit mAb

Catalog No.: A21229

Recombinant

Basic Information

Observed MW

18kDa

Calculated MW

18kDa

Category

SMab Recombinant Monoclonal
Antibody

Applications

WB,ELISA

Cross-Reactivity

Human

CloneNo number

ARC52780

Background

The protein encoded by this gene is an antigen that is overexpressed in many cancers but that is also expressed in normal testis. This gene is found in a duplicated region of the X-chromosome and therefore has a neighboring gene of identical sequence.

Recommended Dilutions

WB 1:5000 - 1:40000

ELISA Recommended starting concentration is 1 µg/mL. Please optimize the concentration based on your specific assay requirements.

Immunogen Information

Gene ID
1485

Swiss Prot
P78358

Immunogen

Synthetic peptide. This information is considered to be commercially sensitive.

Synonyms

CTAG; ESO1; CT6.1; CTAG1; LAGE-2; LAGE2B; NY-ESO-1

Contact

 www.abclonal.com

Product Information

Source
Rabbit

Isotype
IgG

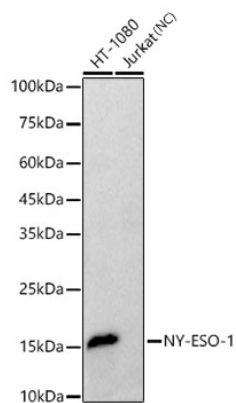
Purification
Affinity purification

Storage

Store at -20°C. Avoid freeze / thaw cycles.

Buffer: PBS containing 50% glycerol and 0.05% BSA, preserved with proclin300 or sodium azide (as specified on the Certificate of Analysis), pH 7.3.

Validation Data



Western blot analysis of various lysates using NY-ESO-1 Rabbit mAb (A21229) at 1:20000 dilution.

Secondary antibody: HRP-conjugated Goat anti-Rabbit IgG (H+L) (AS014) at 1:10000 dilution.

Lysates/proteins: 25µg per lane.

Blocking buffer: 3% nonfat dry milk in TBST.

Detection: ECL Basic Kit (RM00020).

Negative control (NC): Jurkat.

Exposure time: 10s.