

A21171

Leader in Biomolecular Solutions for Life Science



[KD Validated] MRP4/ABCC4 Rabbit mAb

Catalog No.: A21171

Recombinant

Basic Information

Observed MW

140-200kDa

Calculated MW

150kDa

Category

SMab Recombinant Monoclonal
Antibody

Applications

WB,IHC-P,ELISA,IF-P

Cross-Reactivity

Human

CloneNo number

ARC52221

Background

The protein encoded by this gene is a member of the superfamily of ATP-binding cassette (ABC) transporters. ABC proteins transport various molecules across extra- and intra-cellular membranes. ABC genes are divided into seven distinct subfamilies (ABC1, MDR/TAP, MRP, ALD, OABP, GCN20, White). This protein is a member of the MRP subfamily which is involved in multi-drug resistance. This family member plays a role in cellular detoxification as a pump for its substrate, organic anions. It may also function in prostaglandin-mediated cAMP signaling in ciliogenesis. Alternative splicing of this gene results in multiple transcript variants.

Recommended Dilutions

WB 1:500 - 1:1000

IF-P 1:50 - 1:200

IHC-P 1:50 - 1:200

ELISA Recommended starting concentration is 1 µg/mL. Please optimize the concentration based on your specific assay requirements.

Immunogen Information

Gene ID

10257

Swiss Prot

O15439

Immunogen

Recombinant protein (or fragment). This information is considered to be commercially sensitive.

Synonyms

MRP4; MOATB; MOAT-B; C4

Product Information

Source

Rabbit

Isotype

IgG

Purification

Affinity purification

Storage

Store at -20°C. Avoid freeze / thaw cycles.

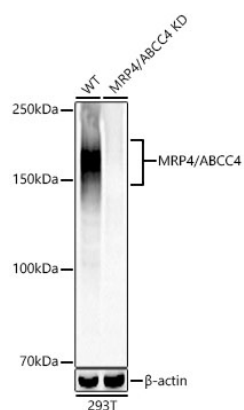
Buffer: PBS containing 50% glycerol and 0.05% BSA, preserved with proclin300 or sodium azide (as specified on the Certificate of Analysis), pH 7.3.

Contact



www.abclonal.com

Validation Data



Western blot analysis of lysates from wild type (WT) and MRP4/ABCC4 knockdown (KD) 293T cells, using [KD Validated] MRP4/ABCC4 Rabbit mAb (A21171) at 1:1000 dilution. Secondary antibody: HRP-conjugated Goat anti-Rabbit IgG (H+L) (AS014) at 1:10000 dilution.

Lysates/proteins: 25 μ g per lane.

Blocking buffer: 3% nonfat dry milk in TBST.

Detection: ECL Basic Kit (RM00020).

Exposure time: 60s.