

A21159

Leader in Biomolecular Solutions for Life Science



AZI2 Rabbit mAb

Catalog No.: A21159 **Recombinant**

Basic Information

Observed MW

47kDa

Calculated MW

45kDa

Category

SMab Recombinant Monoclonal
Antibody

Applications

WB,ELISA

Cross-Reactivity

Human,Mouse,Rat

CloneNo number

ARC2987

Background

AZI2, or NAP1, contributes to the activation of NFκB (see MIM 164011)-dependent gene expression by activating IKK-related kinases, such as NAK (TBK1; MIM 604834) (Fujita et al., 2003 [PubMed 14560022]).

Recommended Dilutions

WB 1:500 - 1:1000

Immunogen Information

Gene ID

64343

Swiss Prot

Q9H6S1

Immunogen

Recombinant protein containing a sequence corresponding to amino acids 282-387 of human AZI2 (NP_071906.1).

Synonyms

AZ2; NAP1; TILP; AZI2

Contact

 www.abclonal.com

Product Information

Source

Rabbit

Isotype

IgG

Purification

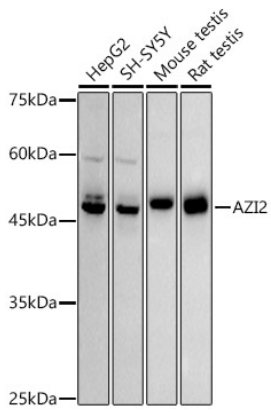
Affinity purification

Storage

Store at -20°C. Avoid freeze / thaw cycles.

Buffer: PBS with 0.02% sodium azide,0.05% BSA,50% glycerol,pH7.3.

Validation Data



Western blot analysis of extracts of various cell lines, using AZI2 antibody (A21159) at 1:1000 dilution.

Secondary antibody: HRP Goat Anti-Rabbit IgG (H+L) (AS014) at 1:10000 dilution.

Lysates/proteins: 25µg per lane.

Blocking buffer: 3% nonfat dry milk in TBST.

Detection: ECL Basic Kit (RM00020).

Exposure time: 180s.