

A21144

Leader in Biomolecular Solutions for Life Science



PMF1 Rabbit mAb

Catalog No.: A21144 **Recombinant**

Basic Information

Observed MW

23kDa

Calculated MW

23kDa

Category

Monoclonal Antibody

Applications

WB,ELISA

Cross-Reactivity

Human,Rat

CloneNo number

ARC3037

Background

Enables leucine zipper domain binding activity and transcription coactivator activity. Involved in chromosome segregation. Located in Golgi apparatus; kinetochore; and nucleoplasm. Part of MIS12/MIND type complex. Implicated in bladder carcinoma and urinary bladder cancer.

Recommended Dilutions

WB 1:500 - 1:1000

ELISA Recommended starting concentration is 1 µg/mL. Please optimize the concentration based on your specific assay requirements.

Immunogen Information

Gene ID

11243

Swiss Prot

Q6P1K2

Immunogen

Recombinant protein (or fragment). This information is considered to be commercially sensitive.

Synonyms

PMF1

Contact

 www.abclonal.com

Product Information

Source

Rabbit

Isotype

IgG

Purification

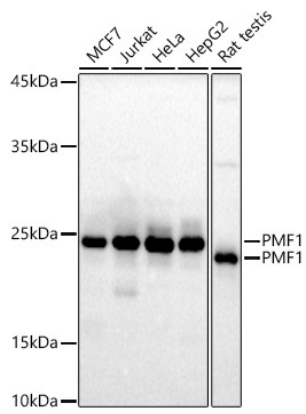
Affinity purification

Storage

Store at -20°C. Avoid freeze / thaw cycles.

Buffer: PBS containing 50% glycerol and 0.05% BSA, preserved with proclin300 or sodium azide (as specified on the Certificate of Analysis), pH 7.3.

Validation Data



Western blot analysis of various lysates using PMF1 Rabbit mAb (A21144) at 1:1000 dilution.
Secondary antibody: HRP-conjugated Goat anti-Rabbit IgG (H+L) (AS014) at 1:10000 dilution.
Lysates/proteins: 25µg per lane.
Blocking buffer: 3% nonfat dry milk in TBST.
Detection: ECL Basic Kit (RM00020).
Exposure time: 90s.