

A21122

Leader in Biomolecular Solutions for Life Science



PP2A-B56 δ /PR61 δ /PPP2R5D Rabbit mAb

Catalog No.: A21122 **Recombinant**

Basic Information

Observed MW

66kDa/69kDa

Calculated MW

70kDa

Category

SMab Recombinant Monoclonal Antibody

Applications

WB,IHC-P,ELISA

Cross-Reactivity

Human,Mouse,Rat

CloneNo number

ARC2981

Background

The product of this gene belongs to the phosphatase 2A regulatory subunit B family. Protein phosphatase 2A is one of the four major Ser/Thr phosphatases, and it is implicated in the negative control of cell growth and division. It consists of a common heteromeric core enzyme, which is composed of a catalytic subunit and a constant regulatory subunit, that associates with a variety of regulatory subunits. The B regulatory subunit might modulate substrate selectivity and catalytic activity. This gene encodes a delta isoform of the regulatory subunit B56 subfamily. Alternatively spliced transcript variants encoding different isoforms have been identified.

Recommended Dilutions

WB	1:500 - 1:1000
IHC-P	1:500 - 1:1000

Immunogen Information

Gene ID	Swiss Prot
5528	Q14738

Immunogen

Recombinant fusion protein containing a sequence corresponding to amino acids 480-602 of human PPP2R5D (NP_006236.1).

Synonyms

B56D; MRD35; B56delta; PP2A-B56 δ /PR61 δ /PPP2R5D

Contact

 www.abclonal.com

Product Information

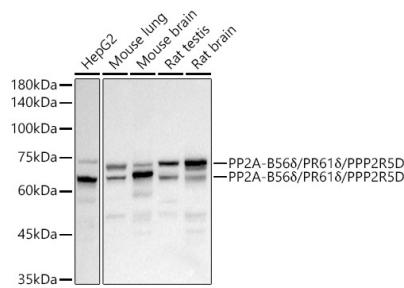
Source	Isotype	Purification
Rabbit	IgG	Affinity purification

Storage

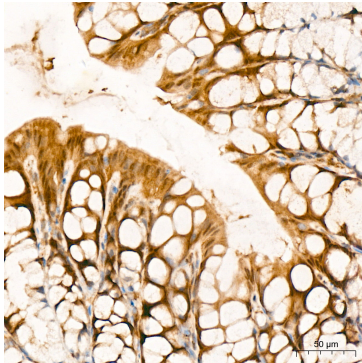
Store at -20°C. Avoid freeze / thaw cycles.

Buffer: PBS with 0.02% sodium azide,0.05% BSA,50% glycerol,pH7.3.

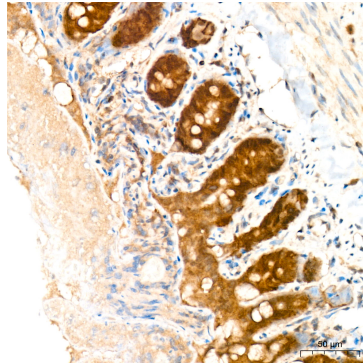
Validation Data



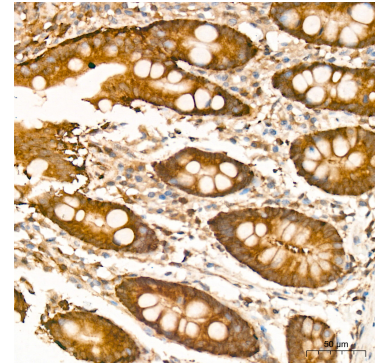
Western blot analysis of various lysates, using PP2A-B56δ/PR61δ/PPP2R5D Rabbit mAb (A21122) at 1:1000 dilution. Secondary antibody: HRP Goat Anti-Rabbit IgG (H+L) (AS014) at 1:10000 dilution. Lysates/proteins: 25ug per lane. Blocking buffer: 3% nonfat dry milk in TBST. Detection: ECL Basic Kit (RM00020). Exposure time: 3s.



Immunohistochemistry analysis of PP2A-B56δ/PR61δ/PPP2R5D in paraffin-embedded mouse colon tissue using PP2A-B56δ/PR61δ/PPP2R5D Rabbit mAb (A21122) at a dilution of 1:1000 (40x lens). High pressure antigen retrieval was performed with 0.01 M citrate buffer (pH 6.0) prior to IHC staining.



Immunohistochemistry analysis of PP2A-B56δ/PR61δ/PPP2R5D in paraffin-embedded rat colon tissue using PP2A-B56δ/PR61δ/PPP2R5D Rabbit mAb (A21122) at a dilution of 1:1000 (40x lens). High pressure antigen retrieval was performed with 0.01 M citrate buffer (pH 6.0) prior to IHC staining.



Immunohistochemistry analysis of PP2A-B56δ/PR61δ/PPP2R5D in paraffin-embedded human colon tissue using PP2A-B56δ/PR61δ/PPP2R5D Rabbit mAb (A21122) at a dilution of 1:1000 (40x lens). High pressure antigen retrieval was performed with 0.01 M citrate buffer (pH 6.0) prior to IHC staining.