

A21105

Leader in Biomolecular Solutions for Life Science



## SLC25A51 Rabbit pAb

Catalog No.: A21105

2 Publications

### Basic Information

#### Observed MW

34kDa

#### Calculated MW

34kDa

#### Category

Polyclonal Antibody

#### Applications

WB,ELISA

#### Cross-Reactivity

Human,Mouse,Rat

### Background

Enables NAD transmembrane transporter activity. Involved in mitochondrial NAD transmembrane transport. Located in mitochondrion. Is active in mitochondrial inner membrane.

### Recommended Dilutions

**WB** 1:500 - 1:1000

**ELISA** Recommended starting concentration is 1 µg/mL. Please optimize the concentration based on your specific assay requirements.

### Immunogen Information

**Gene ID**  
92014

**Swiss Prot**  
Q9H1U9

#### Immunogen

Synthetic peptide. This information is considered to be commercially sensitive.

#### Synonyms

CG7943; MCART1; SLC25A51

### Contact



[www.abclonal.com](http://www.abclonal.com)

### Product Information

**Source**  
Rabbit

**Isotype**  
IgG

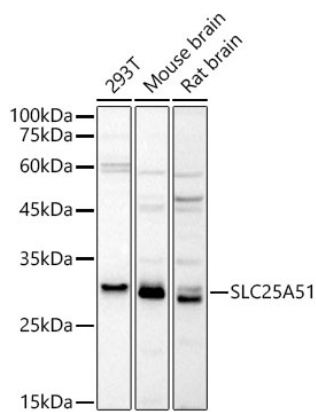
**Purification**  
Affinity purification

#### Storage

Store at -20°C. Avoid freeze / thaw cycles.

Buffer: PBS with 0.09% Sodium azide,50% glycerol,pH7.3.

## Validation Data



Western blot analysis of various lysates using SLC25A51 Rabbit pAb (A21105) at 1:1000 dilution.

Secondary antibody: HRP-conjugated Goat anti-Rabbit IgG (H+L) (AS014) at 1:10000 dilution.

Lysates/proteins: 25µg per lane.

Blocking buffer: 3% nonfat dry milk in TBST.

Detection: ECL Basic Kit (RM00020).

Exposure time: 10s.