

A21058

Leader in Biomolecular Solutions for Life Science



Mineralocorticoid receptor (NR3C2) Rabbit mAb

Catalog No.: A21058 **Recombinant**

Basic Information

Observed MW

107kDa

Calculated MW

107kDa

Category

SMab Recombinant Monoclonal Antibody

Applications

WB,ELISA

Cross-Reactivity

Human

CloneNo number

ARC51728

Background

This gene encodes the mineralocorticoid receptor, which mediates aldosterone actions on salt and water balance within restricted target cells. The protein functions as a ligand-dependent transcription factor that binds to mineralocorticoid response elements in order to transactivate target genes. Mutations in this gene cause autosomal dominant pseudohypoaldosteronism type I, a disorder characterized by urinary salt wasting. Defects in this gene are also associated with early onset hypertension with severe exacerbation in pregnancy. Alternative splicing results in multiple transcript variants.

Recommended Dilutions

WB 1:500 - 1:1000

ELISA Recommended starting concentration is 1 µg/mL. Please optimize the concentration based on your specific assay requirements.

Immunogen Information

Gene ID

4306

Swiss Prot

P08235

Immunogen

Recombinant fusion protein containing a sequence corresponding to amino acids 450-600 of human Mineralocorticoid receptor (NR3C2) (NP_000892.2).

Synonyms

MR; MCR; MLR; NR3C2VIT; Mineralocorticoid receptor (NR3C2)

Contact

 www.abclonal.com

Product Information

Source

Rabbit

Isotype

IgG

Purification

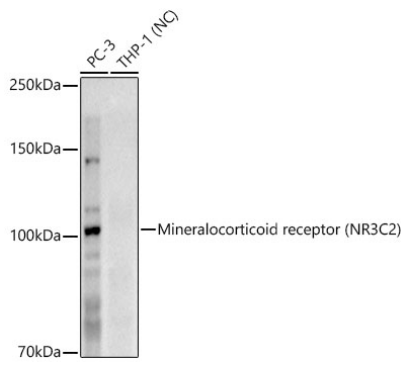
Affinity purification

Storage

Store at -20°C. Avoid freeze / thaw cycles.

Buffer: PBS with 0.05% proclin300,0.05% BSA,50% glycerol,pH7.3.

Validation Data



Western blot analysis of various lysates, using Mineralocorticoid receptor (NR3C2) Rabbit mAb (A21058) at 1:1000 dilution.
Secondary antibody: HRP-conjugated Goat anti-Rabbit IgG (H+L) (AS014) at 1:10000 dilution.
Lysates/proteins: 25µg per lane.
Blocking buffer: 3% nonfat dry milk in TBST.
Detection: ECL Enhanced Kit (RM00021).
Negative control (NC): THP-1
Exposure time: 180s.