

A20955

Leader in Biomolecular Solutions for Life Science



Nup107 Rabbit mAb

Catalog No.: A20955

Recombinant

Basic Information

Observed MW

106 kDa

Calculated MW

106 kDa

Category

Monoclonal Antibody

Applications

WB, ELISA

Cross-Reactivity

Human

CloneNo number

ARC2942

Background

This gene encodes a member of the nucleoporin family. The protein is localized to the nuclear rim and is an essential component of the nuclear pore complex (NPC). All molecules entering or leaving the nucleus either diffuse through or are actively transported by the NPC. Alternate transcriptional splice variants of this gene have been observed but have not been thoroughly characterized.

Recommended Dilutions

WB 1:500 - 1:1000

ELISA Recommended starting concentration is 1 µg/mL. Please optimize the concentration based on your specific assay requirements.

Immunogen Information

Gene ID

57122

Swiss Prot

P57740

Immunogen

Synthetic peptide. This information is considered to be commercially sensitive.

Synonyms

ODG6; NUP84; NPHS11; GAMOS7; Nup107

Contact

 www.abclonal.com

Product Information

Source

Rabbit

Isotype

IgG

Purification

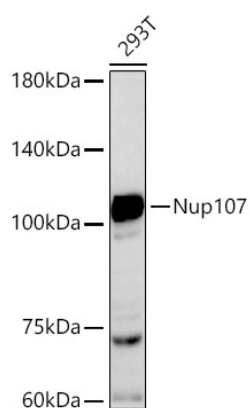
Affinity purification

Storage

Store at -20°C. Avoid freeze / thaw cycles.

Buffer: PBS containing 50% glycerol and 0.05% BSA, preserved with proclin300 or sodium azide (as specified on the Certificate of Analysis), pH 7.3.

Validation Data



Western blot analysis of various lysates using Nup107 Rabbit mAb (A20955) at 1:500 dilution.

Secondary antibody: HRP-conjugated Goat anti-Rabbit IgG (H+L) (AS014) at 1:10000 dilution.

Lysates/proteins: 25µg per lane.

Blocking buffer: 3% nonfat dry milk in TBST.

Detection: ECL Basic Kit (RM00020).

Exposure time: 60s.