

A20954

Leader in Biomolecular Solutions for Life Science



# eIF1A Rabbit mAb

Catalog No.: A20954 **Recombinant**

## Basic Information

### Observed MW

16kDa

### Calculated MW

16kDa

### Category

SMab Recombinant Monoclonal  
Antibody

### Applications

WB,ELISA

### Cross-Reactivity

Human,Mouse

### CloneNo number

ARC2941

## Background

This gene encodes an essential eukaryotic translation initiation factor. The protein is required for the binding of the 43S complex (a 40S subunit, eIF2/GTP/Met-tRNA<sub>i</sub> and eIF3) to the 5' end of capped RNA.

## Recommended Dilutions

WB 1:500 - 1:1000

## Immunogen Information

### Gene ID

1964

### Swiss Prot

P47813

### Immunogen

A synthetic peptide corresponding to a sequence within amino acids 65-144 of human eIF1A (P47813).

### Synonyms

EIF1A; EIF4C; eIF-1A; eIF-4C; EIF1AP1; eIF1A

## Contact

 [www.abclonal.com](http://www.abclonal.com)

## Product Information

### Source

Rabbit

### Isotype

IgG

### Purification

Affinity purification

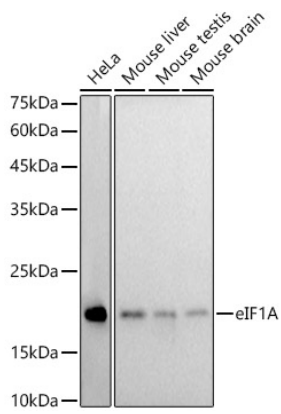
### Storage

Store at -20°C. Avoid freeze / thaw cycles.

Buffer: PBS with 0.02% sodium azide,0.05% BSA,50% glycerol,pH7.3.

## Validation Data

---



Western blot analysis of various lysates, using eIF1A Rabbit mAb (A20954) at 1:1000 dilution.

Secondary antibody: HRP Goat Anti-Rabbit IgG (H+L) (AS014) at 1:10000 dilution.

Lysates/proteins: 25µg per lane.

Blocking buffer: 3% nonfat dry milk in TBST.

Detection: ECL Basic Kit (RM00020).

Exposure time: 180s.