

A20901

Leader in Biomolecular Solutions for Life Science



Importin 9 / RANBP9 Rabbit mAb

Catalog No.: A20901

Recombinant

1 Publications

Basic Information

Observed MW

116kDa

Calculated MW

116kDa

Category

SMab Recombinant Monoclonal
Antibody

Applications

WB,IHC-P,ELISA

Cross-Reactivity

Human,Mouse,Rat

CloneNo number

ARC2864

Background

Enables nuclear import signal receptor activity. Involved in protein import into nucleus.
Located in cytoplasm.

Recommended Dilutions

WB 1:500 - 1:1000

IHC-P 1:50 - 1:200

ELISA Recommended starting
concentration is 1
µg/mL. Please optimize
the concentration
based on your specific
assay requirements.

Immunogen Information

Gene ID

55705

Swiss Prot

Q96P70

Immunogen

Synthetic peptide. This information is considered to be commercially sensitive.

Synonyms

Imp9; Importin 9 / RANBP9

Contact



www.abclonal.com

Product Information

Source

Rabbit

Isotype

IgG

Purification

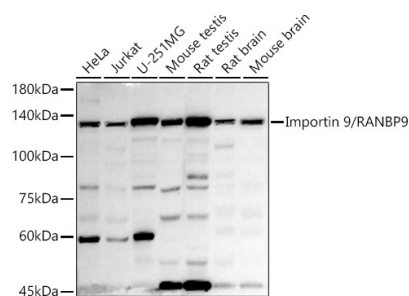
Affinity purification

Storage

Store at -20°C. Avoid freeze / thaw cycles.

Buffer: PBS with 0.02% sodium azide,0.05% BSA,50% glycerol,pH7.3.

Validation Data



Western blot analysis of various lysates using Importin 9 / RANBP9 Rabbit mAb (A20901) at 1:1000 dilution.

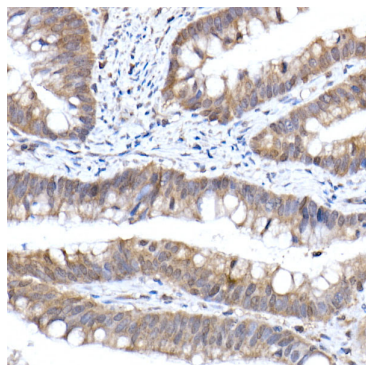
Secondary antibody: HRP-conjugated Goat anti-Rabbit IgG (H+L) (AS014) at 1:10000 dilution.

Lysates/proteins: 25µg per lane.

Blocking buffer: 3% nonfat dry milk in TBST.

Detection: ECL Basic Kit (RM00020).

Exposure time: 180s.



Immunohistochemistry analysis of paraffin-embedded Human colon carcinoma using Importin 9 / RANBP9 Rabbit mAb (A20901) at dilution of 1:200 (40x lens). High pressure antigen retrieval performed with 0.01M Citrate buffer (pH 6.0) prior to IHC staining.