

A20900

Leader in Biomolecular Solutions for Life Science



# SARA Rabbit mAb

Catalog No.: A20900 **Recombinant**

## Basic Information

### Observed MW

180kDa

### Calculated MW

156kDa

### Category

SMab Recombinant Monoclonal  
Antibody

### Applications

WB,IHC-P,ELISA

### Cross-Reactivity

Human,Mouse,Rat

### CloneNo number

ARC2863

## Recommended Dilutions

<b>WB</b>	1:500 - 1:1000
<b>IHC-P</b>	1:50 - 1:200

## Contact

 [www.abclonal.com](http://www.abclonal.com)

## Background

This gene encodes a double zinc finger motif-containing protein that participates in the transforming growth factor-beta (TGFB) signalling pathway. The encoded protein interacts directly with SMAD2 and SMAD3, and recruits SMAD2 to the TGFB receptor. There are multiple pseudogenes for this gene on chromosomes 2, 15, and X. Alternative splicing results in multiple transcript variants.

## Immunogen Information

<b>Gene ID</b>	<b>Swiss Prot</b>
9372	O95405

### Immunogen

A synthetic peptide corresponding to a sequence within amino acids 1-100 of human SARA (O95405).

### Synonyms

NSP; SARA; MADHIP; SMADIP; PPP1R173

## Product Information

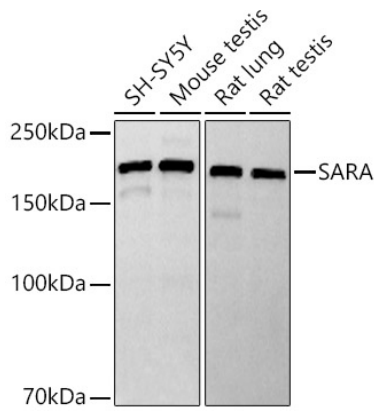
<b>Source</b>	<b>Isotype</b>	<b>Purification</b>
Rabbit	IgG	Affinity purification

### Storage

Store at -20°C. Avoid freeze / thaw cycles.

Buffer: PBS with 0.02% sodium azide,0.05% BSA,50% glycerol,pH7.3.

## Validation Data



Western blot analysis of various lysates, using SARA Rabbit mAb (A20900) at 1:1000 dilution.

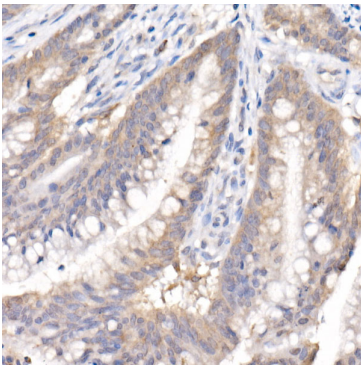
Secondary antibody: HRP Goat Anti-Rabbit IgG (H+L) (AS014) at 1:10000 dilution.

Lysates/proteins: 25µg per lane.

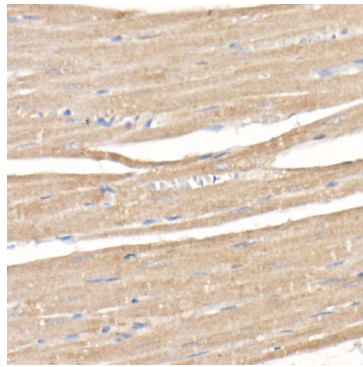
Blocking buffer: 3% nonfat dry milk in TBST.

Detection: ECL Basic Kit (RM00020).

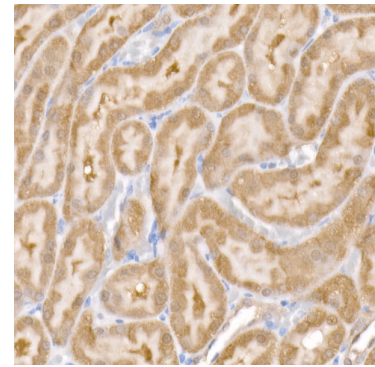
Exposure time: 90s.



Immunohistochemistry analysis of paraffin-embedded human colon carcinoma using SARA Rabbit mAb (A20900) at dilution of 1:50 (40x lens). Perform high pressure antigen retrieval with 10 mM citrate buffer pH 6.0 before commencing with IHC staining protocol.



Immunohistochemistry analysis of paraffin-embedded rat heart using SARA Rabbit mAb (A20900) at dilution of 1:50 (40x lens). Perform high pressure antigen retrieval with 10 mM citrate buffer pH 6.0 before commencing with IHC staining protocol.



Immunohistochemistry analysis of paraffin-embedded rat kidney using SARA Rabbit mAb (A20900) at dilution of 1:50 (40x lens). Perform high pressure antigen retrieval with 10 mM citrate buffer pH 6.0 before commencing with IHC staining protocol.