

A20882

Leader in Biomolecular Solutions for Life Science

RAB5C / RABL Rabbit mAb



Catalog No.: A20882 **Recombinant**

Basic Information

Observed MW

25kDa

Calculated MW

23kDa

Category

SMab Recombinant Monoclonal Antibody

Applications

WB,IF/ICC,IP,ELISA

Cross-Reactivity

Human,Mouse,Rat

CloneNo number

ARC2829

Background

Members of the Rab protein family are small GTPases of the Ras superfamily that are thought to ensure fidelity in the process of docking and/or fusion of vesicles with their correct acceptor compartment (Han et al., 1996 [PubMed 8646882]).

Recommended Dilutions

WB 1:500 - 1:1000

IF/ICC 1:50 - 1:200

Immunogen Information

Gene ID

5878

Swiss Prot

P51148

Immunogen

Recombinant fusion protein containing a sequence corresponding to amino acids 2-216 of human RAB5C / RABL (P51148).

Synonyms

RABL; L1880; RAB5L; RAB5CL; RAB5C / RABL

Contact



www.abclonal.com

Product Information

Source

Rabbit

Isotype

IgG

Purification

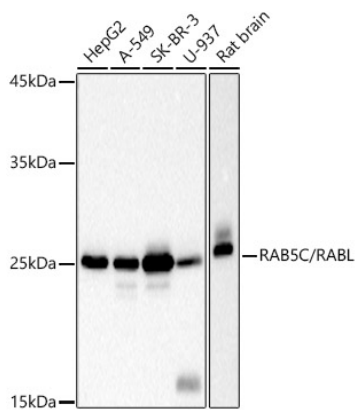
Affinity purification

Storage

Store at -20°C. Avoid freeze / thaw cycles.

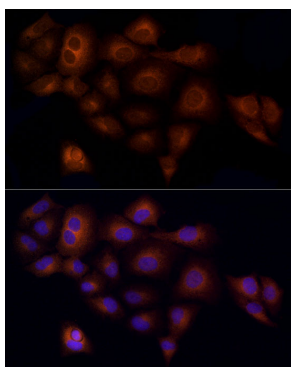
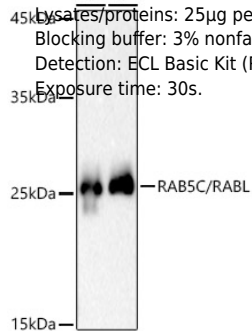
Buffer: PBS with 0.02% sodium azide,0.05% BSA,50% glycerol,pH7.3.

Validation Data

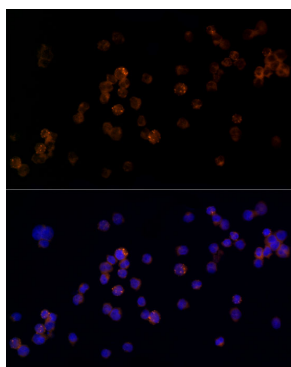


Western blot analysis of extracts of various cell lines, using RAB5C/RABL antibody (A20882) at 1:1000 dilution. Secondary antibody: HRP Goat Anti-Rabbit IgG (H+L) (AS014) at 1:10000 dilution. Lysates/proteins: 25µg per lane. Blocking buffer: 3% nonfat dry milk in TBST. Detection: ECL Basic Kit (RM00020). Exposure time: 10s.

Western blot analysis of extracts of various cell lines, using RAB5C/RABL antibody (A20882) at 1:1000 dilution. Secondary antibody: HRP Goat Anti-Rabbit IgG (H+L) (AS014) at 1:10000 dilution. Lysates/proteins: 25µg per lane. Blocking buffer: 3% nonfat dry milk in TBST. Detection: ECL Basic Kit (RM00020). Exposure time: 30s.



Immunofluorescence analysis of A-549 cells using RAB5C / RABL Rabbit mAb (A20882) at dilution of 1:100 (40x lens). Blue: DAPI for nuclear staining.



Immunofluorescence analysis of U-937 cells using RAB5C / RABL Rabbit mAb (A20882) at dilution of 1:100 (40x lens). Blue: DAPI for nuclear staining.