

A2081

Leader in Biomolecular Solutions for Life Science



# GSK3 $\beta$ Rabbit pAb

Catalog No.: A2081

43 Publications

## Basic Information

### Observed MW

46kDa

### Calculated MW

47kDa

### Category

Polyclonal Antibody

### Applications

WB,IHC-P,IF/ICC,IP,ELISA

### Cross-Reactivity

Human,Mouse,Rat

## Background

The protein encoded by this gene is a serine-threonine kinase belonging to the glycogen synthase kinase subfamily. It is a negative regulator of glucose homeostasis and is involved in energy metabolism, inflammation, ER-stress, mitochondrial dysfunction, and apoptotic pathways. Defects in this gene have been associated with Parkinson disease and Alzheimer disease.

## Recommended Dilutions

**WB** 1:500 - 1:2000

**IHC-P** 1:50 - 1:200

**IF/ICC** 1:50 - 1:200

**IP** 0.5 $\mu$ g-4 $\mu$ g antibody for  
200 $\mu$ g-400 $\mu$ g extracts  
of whole cells

**ELISA** Recommended starting  
concentration is 1  
 $\mu$ g/mL. Please optimize  
the concentration  
based on your specific  
assay requirements.

## Immunogen Information

### Gene ID

2932

### Swiss Prot

P49841

### Immunogen

Synthetic peptide. This information is considered to be commercially sensitive.

### Synonyms

GSK3B; gsk-3 $\beta$ ; GSK3 $\beta$

## Product Information

### Source

Rabbit

### Isotype

IgG

### Purification

Affinity purification

### Storage

Store at -20°C. Avoid freeze / thaw cycles.

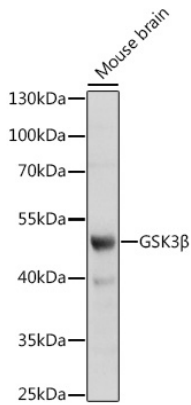
Buffer: PBS containing 50% glycerol, preserved with proclin300 or sodium azide (as specified on the Certificate of Analysis), pH 7.3.

## Contact



[www.abclonal.com](http://www.abclonal.com)

## Validation Data



Western blot analysis of lysates from mouse brain, using GSK3 $\beta$  Rabbit pAb (A2081) at 1:1000 dilution.

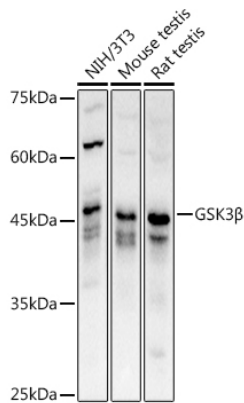
Secondary antibody: HRP-conjugated Goat anti-Rabbit IgG (H+L) (AS014) at 1:10000 dilution.

Lysates/proteins: 25 $\mu$ g per lane.

Blocking buffer: 3% nonfat dry milk in TBST.

Detection: ECL Basic Kit (RM00020).

Exposure time: 90s.



Western blot analysis of various lysates using GSK3 $\beta$  Rabbit pAb (A2081) at 1:1000 dilution.

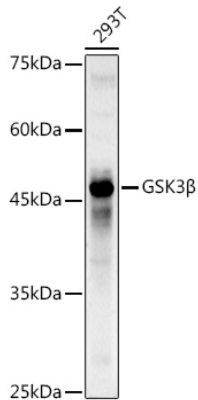
Secondary antibody: HRP-conjugated Goat anti-Rabbit IgG (H+L) (AS014) at 1:10000 dilution.

Lysates/proteins: 25 $\mu$ g per lane.

Blocking buffer: 3% nonfat dry milk in TBST.

Detection: ECL Basic Kit (RM00020).

Exposure time: 3s.



Western blot analysis of lysates from 293T cells, using GSK3 $\beta$  Rabbit pAb (A2081) at 1:1000 dilution.

Secondary antibody: HRP-conjugated Goat anti-Rabbit IgG (H+L) (AS014) at 1:10000 dilution.

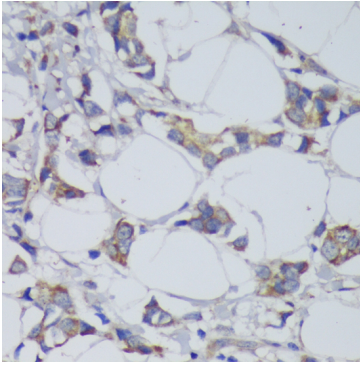
Lysates/proteins: 25 $\mu$ g per lane.

Blocking buffer: 3% nonfat dry milk in TBST.

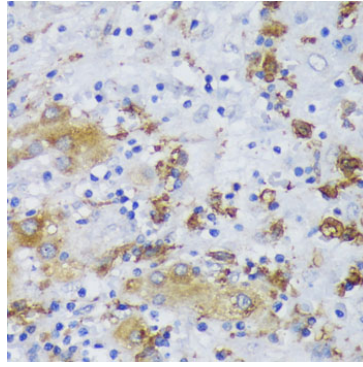
Detection: ECL Basic Kit (RM00020).

Exposure time: 90s.

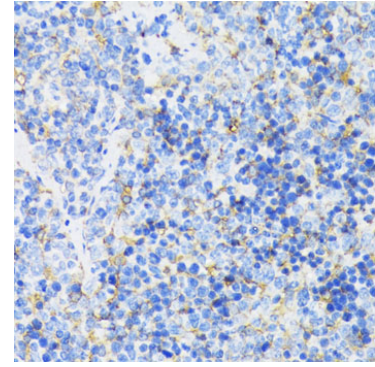
## Validation Data



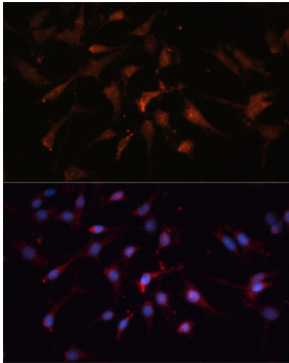
Immunohistochemistry analysis of paraffin-embedded Human mammary cancer using GSK3 $\beta$  Rabbit pAb (A2081) at dilution of 1:200 (40x lens). Microwave antigen retrieval performed with 0.01M PBS Buffer (pH 7.2) prior to IHC staining.



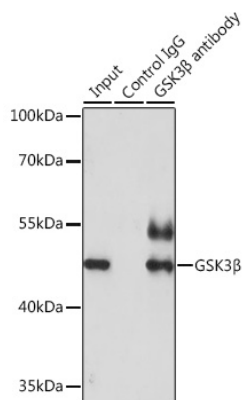
Immunohistochemistry analysis of paraffin-embedded Human liver cancer using GSK3 $\beta$  Rabbit pAb (A2081) at dilution of 1:200 (40x lens). Microwave antigen retrieval performed with 0.01M PBS Buffer (pH 7.2) prior to IHC staining.



Immunohistochemistry analysis of paraffin-embedded Mouse spleen using GSK3 $\beta$  Rabbit pAb (A2081) at dilution of 1:200 (40x lens). Microwave antigen retrieval performed with 0.01M PBS Buffer (pH 7.2) prior to IHC staining.



Immunofluorescence analysis of C6 cells using GSK3 $\beta$  Rabbit pAb (A2081) at dilution of 1:100. Blue: DAPI for nuclear staining.



Immunoprecipitation analysis of 200  $\mu$ g extracts of HeLa cells using 3  $\mu$ g GSK3 $\beta$  antibody (A2081). Western blot was performed from the immunoprecipitate using GSK3 $\beta$  antibody (A2081) at a dilution of 1:1000.