

A20737

Leader in Biomolecular Solutions for Life Science



Phospho-SQSTM1/p62-S349 Rabbit pAb

Catalog No.: A20737

Basic Information

Observed MW

62kDa

Calculated MW

48kDa

Category

Polyclonal Antibody

Applications

WB, ELISA

Cross-Reactivity

Human, Mouse, Rat

Background

This gene encodes a multifunctional protein that binds ubiquitin and regulates activation of the nuclear factor kappa-B (NF- κ B) signaling pathway. The protein functions as a scaffolding/adaptor protein in concert with TNF receptor-associated factor 6 to mediate activation of NF- κ B in response to upstream signals. Alternatively spliced transcript variants encoding either the same or different isoforms have been identified for this gene. Mutations in this gene result in sporadic and familial Paget disease of bone.

Recommended Dilutions

WB 1:100 - 1:500

Immunogen Information

Gene ID

8878

Swiss Prot

Q13501

Immunogen

A synthetic phosphorylated peptide around S349 of human SQSTM1/p62 (NP_003891.1).

Synonyms

p60; p62; A170; DMRV; OSIL; PDB3; ZIP3; p62B; NADGP; FTDALS3; Phospho-SQSTM1/p62-S349

Contact



www.abclonal.com

Product Information

Source

Rabbit

Isotype

IgG

Purification

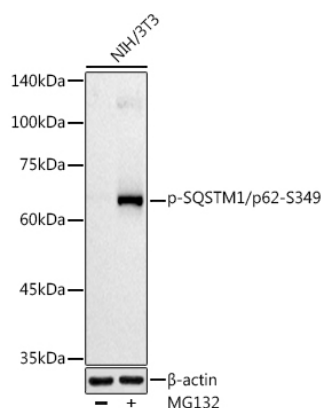
Affinity purification

Storage

Store at -20°C. Avoid freeze / thaw cycles.

Buffer: PBS with 0.05% proclin300, 50% glycerol, pH7.3.

Validation Data



Western blot analysis of lysates from NIH/3T3 cells, using Phospho-SQSTM1/p62-S349 Rabbit pAb (A20737) at 1:500 dilution. NIH/3T3 cells were treated by MG132 (50 μ M) at 37°C for 90 minutes.

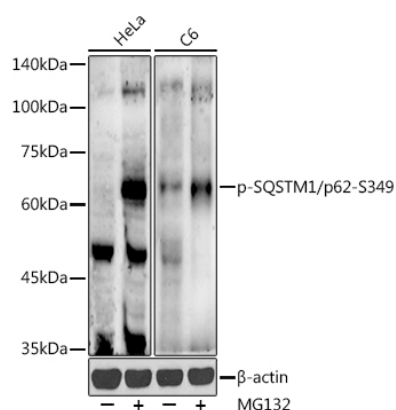
Secondary antibody: HRP Goat Anti-Rabbit IgG (H+L) (AS014) at 1:10000 dilution.

Lysates/proteins: 25 μ g per lane.

Blocking buffer: 3% nonfat dry milk in TBST.

Detection: ECL Basic Kit (RM00020).

Exposure time: 90s.



Western blot analysis of various lysates using Phospho-SQSTM1/p62-S349 Rabbit pAb (A20737) at 1:500 dilution. HeLa cells and C6 cells were treated by MG132 (50 μ M) at 37°C for 90 minutes.

Secondary antibody: HRP Goat Anti-Rabbit IgG (H+L) (AS014) at 1:10000 dilution.

Lysates/proteins: 25 μ g per lane.

Blocking buffer: 3% nonfat dry milk in TBST.

Detection: ECL Enhanced Kit (RM00021).

Exposure time: 90s.