

A20717

Leader in Biomolecular Solutions for Life Science



SLC38A1 Rabbit pAb

Catalog No.: A20717 **1 Publications**

Basic Information

Observed MW

50-70kDa

Calculated MW

54kDa

Category

Polyclonal Antibody

Applications

WB,ELISA

Cross-Reactivity

Human,Rat

Background

Amino acid transporters play essential roles in the uptake of nutrients, production of energy, chemical metabolism, detoxification, and neurotransmitter cycling. SLC38A1 is an important transporter of glutamine, an intermediate in the detoxification of ammonia and the production of urea. Glutamine serves as a precursor for the synaptic transmitter, glutamate (Gu et al., 2001 [PubMed 11325958]).

Recommended Dilutions

WB 1:500 - 1:1000

ELISA Recommended starting concentration is 1 µg/mL. Please optimize the concentration based on your specific assay requirements.

Immunogen Information

Gene ID

81539

Swiss Prot

Q9H2H9

Immunogen

Recombinant protein (or fragment). This information is considered to be commercially sensitive.

Synonyms

ATA1; NAT2; SAT1; SNAT1; SLC38A1

Contact

 www.abclonal.com

Product Information

Source

Rabbit

Isotype

IgG

Purification

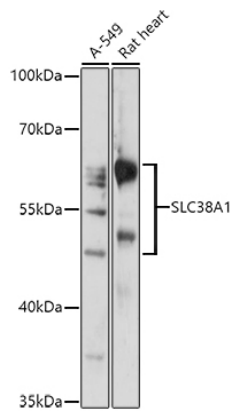
Affinity purification

Storage

Store at -20°C. Avoid freeze / thaw cycles.

Buffer: PBS with 0.01% thimerosal, 50% glycerol, pH7.3.

Validation Data



Western blot analysis of various lysates using SLC38A1 Rabbit pAb (A20717) at 1:1000 dilution.

Secondary antibody: HRP-conjugated Goat anti-Rabbit IgG (H+L) (AS014) at 1:10000 dilution.

Lysates/proteins: 25 μ g per lane.

Blocking buffer: 3% nonfat dry milk in TBST.

Detection: ECL Enhanced Kit (RM00021).

Exposure time: 60s.