

A20677

Leader in Biomolecular Solutions for Life Science



LF1 Rabbit pAb

Catalog No.: A20677

Basic Information

Observed MW

92kDa

Calculated MW

92kDa

Category

Polyclonal Antibody

Applications

WB,ELISA

Cross-Reactivity

Oryza sativa

Background

the mutation of LF1 induces ectopic expression of OSH1, which results in the initiation of lateral meristems to generate lateral florets in the axil of the sterile lemma.

Recommended Dilutions

WB 1:500 - 1:2000

ELISA Recommended starting concentration is 1 µg/mL. Please optimize the concentration based on your specific assay requirements.

Immunogen Information

Gene ID

4331345

Swiss Prot

Q6TAQ6

Immunogen

Recombinant protein (or fragment). This information is considered to be commercially sensitive.

Synonyms

hb1; HOX10; OsHB1; OsHox10; OsJ_008792; LF1

Contact



www.abclonal.com

Product Information

Source

Rabbit

Isotype

IgG

Purification

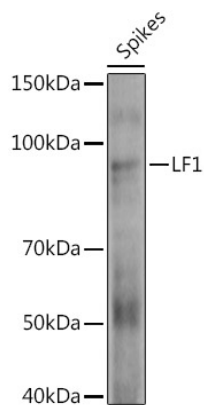
Affinity purification

Storage

Store at -20°C. Avoid freeze / thaw cycles.

Buffer: PBS with 0.05% proclin300, 50% glycerol, pH7.3.

Validation Data



Western blot analysis of extracts of various tissues from the japonica rice (*Oryza sativa* L.) variety Zhonghua 11, using LF1 Rabbit pAb (A20677) at 1:1000 dilution.
Secondary antibody: HRP-conjugated Goat anti-Rabbit IgG (H+L) (AS014) at 1:10000 dilution.
Lysates/proteins: 25µg per lane.
Blocking buffer: 3% nonfat dry milk in TBST.
Detection: ECL Enhanced Kit (RM00021).
Exposure time: 60s.