

A20634

Leader in Biomolecular Solutions for Life Science



# Bph3 Rabbit pAb

Catalog No.: A20634

## Basic Information

### Observed MW

90kDa

### Calculated MW

90kDa

### Category

Polyclonal Antibody

### Applications

WB,ELISA

### Cross-Reactivity

Oryza sativa

## Background

Bph3 is a cluster of three genes encoding plasma membrane-localized lectin receptor kinases (OsLecRK1-OsLecRK3)

## Recommended Dilutions

**WB** 1:500 - 1:2000

**ELISA** Recommended starting concentration is 1 µg/mL. Please optimize the concentration based on your specific assay requirements.

## Immunogen Information

### Gene ID

4335151

### Swiss Prot

### Immunogen

Recombinant protein (or fragment). This information is considered to be commercially sensitive.

### Synonyms

OsLecRK3; Bph3

## Contact

 [www.abclonal.com](http://www.abclonal.com)

## Product Information

### Source

Rabbit

### Isotype

IgG

### Purification

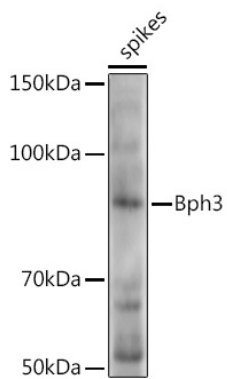
Affinity purification

### Storage

Store at -20°C. Avoid freeze / thaw cycles.

Buffer: PBS with 0.05% proclin300, 50% glycerol, pH7.3.

Validation Data



Western blot analysis of extracts of various tissues from the japonica rice (*Oryza sativa* L.) variety Zhonghua 11, using Bph3 Rabbit pAb (A20634) at 1:1000 dilution.  
Secondary antibody: HRP-conjugated Goat anti-Rabbit IgG (H+L) (AS014) at 1:10000 dilution.  
Lysates/proteins: 25µg per lane.  
Blocking buffer: 3% nonfat dry milk in TBST.  
Detection: ECL Enhanced Kit (RM00021).  
Exposure time: 30s.