

A20632

Leader in Biomolecular Solutions for Life Science



OsBip1 Rabbit pAb

Catalog No.: A20632

Basic Information

Observed MW

80kDa

Calculated MW

73kDa

Category

Polyclonal Antibody

Applications

WB,ELISA

Cross-Reactivity

Oryza sativa

Background

This protein is involved in the pathway starch biosynthesis, which is part of Glycan biosynthesis.

Recommended Dilutions

WB 1:500 - 1:2000

ELISA Recommended starting concentration is 1 µg/mL. Please optimize the concentration based on your specific assay requirements.

Immunogen Information

Gene ID

4328075

Swiss Prot

Q6Z7B0

Immunogen

Recombinant fusion protein containing a sequence corresponding to amino acids 300-400 of Oryza sativa OsBip1. (Q6Z7B0).

Synonyms

BIP; OsBiP1; OsJ_05115; OJ1442_E05.10; OsBip1

Contact

 www.abclonal.com

Product Information

Source

Rabbit

Isotype

IgG

Purification

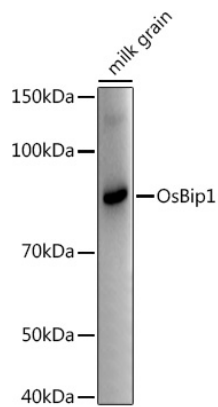
Affinity purification

Storage

Store at -20°C. Avoid freeze / thaw cycles.

Buffer: PBS with 0.05% proclin300,50% glycerol,pH7.3.

Validation Data



Western blot analysis of extracts of various tissues from the japonica rice (*Oryza sativa* L.) variety Zhonghua 11, using OsBip1 Rabbit pAb (A20632) at 1:1000 dilution.
Secondary antibody: HRP-conjugated Goat anti-Rabbit IgG (H+L) (AS014) at 1:10000 dilution.

Lysates/proteins: 25µg per lane.

Blocking buffer: 3% nonfat dry milk in TBST.

Detection: ECL Enhanced Kit (RM00021).

Exposure time: 10s.