

A20617

Leader in Biomolecular Solutions for Life Science



Somatostatin (SST) Rabbit mAb

Catalog No.: A20617

Recombinant

2 Publications

Basic Information

Observed MW

Refer to figures

Calculated MW

13kDa

Category

SMab Recombinant Monoclonal Antibody

Applications

IHC-P,IF,ICC,ELISA

Cross-Reactivity

Human,Mouse,Rat

CloneNo number

ARC50670

Background

The hormone somatostatin has active 14 aa and 28 aa forms that are produced by alternate cleavage of the single preproprotein encoded by this gene. Somatostatin is expressed throughout the body and inhibits the release of numerous secondary hormones by binding to high-affinity G-protein-coupled somatostatin receptors. This hormone is an important regulator of the endocrine system through its interactions with pituitary growth hormone, thyroid stimulating hormone, and most hormones of the gastrointestinal tract. Somatostatin also affects rates of neurotransmission in the central nervous system and proliferation of both normal and tumorigenic cells.

Recommended Dilutions

IHC-P 1:500 - 1:2000

IF/ICC 1:50-1:200

ELISA Recommended starting concentration is 1 µg/mL. Please optimize the concentration based on your specific assay requirements.

Immunogen Information

Gene ID

6750

Swiss Prot

P61278

Immunogen

Recombinant fusion protein containing a sequence corresponding to amino acids 23-116 of human Somatostatin (SST) (NP_001039.1).

Synonyms

SMST; SST1; Somatostatin (SST)

Contact

 www.abclonal.com

Product Information

Source

Rabbit

Isotype

IgG

Purification

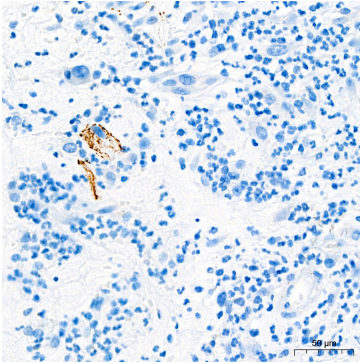
Affinity purification

Storage

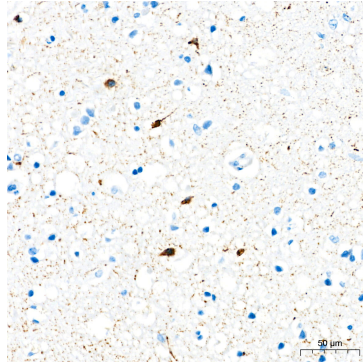
Store at -20°C. Avoid freeze / thaw cycles.

Buffer: PBS with 0.05% proclin300,0.05% BSA,50% glycerol,pH7.3.

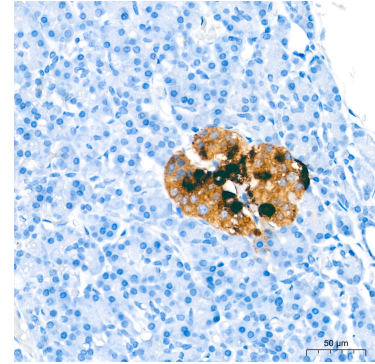
Validation Data



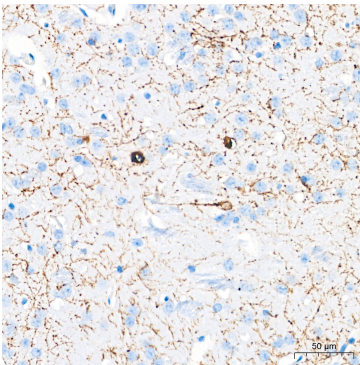
Immunohistochemistry analysis of paraffin-embedded Human colon tissue using Somatostatin (SST) Rabbit mAb (A20617) at a dilution of 1:1000 (40x lens). High pressure antigen retrieval performed with 0.01M Citrate Buffer(pH 6.0) prior to IHC staining.



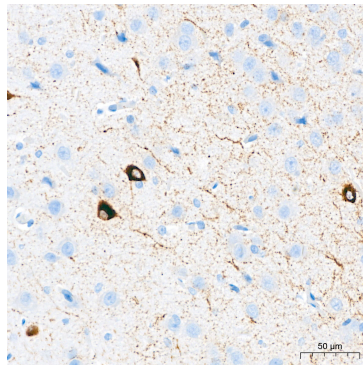
Immunohistochemistry analysis of paraffin-embedded Human brain tissue using Somatostatin (SST) Rabbit mAb (A20617) at a dilution of 1:1000 (40x lens). High pressure antigen retrieval performed with 0.01M Citrate Buffer(pH 6.0) prior to IHC staining.



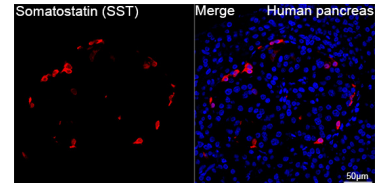
Immunohistochemistry analysis of paraffin-embedded Human pancreas tissue using Somatostatin (SST) Rabbit mAb (A20617) at a dilution of 1:1000 (40x lens). High pressure antigen retrieval performed with 0.01M Citrate Buffer(pH 6.0) prior to IHC staining.



Immunohistochemistry analysis of paraffin-embedded Mouse brain tissue using Somatostatin (SST) Rabbit mAb (A20617) at a dilution of 1:1000 (40x lens). High pressure antigen retrieval performed with 0.01M Citrate Buffer(pH 6.0) prior to IHC staining.



Immunohistochemistry analysis of paraffin-embedded Rat brain tissue using Somatostatin (SST) Rabbit mAb (A20617) at a dilution of 1:1000 (40x lens). High pressure antigen retrieval performed with 0.01M Citrate Buffer(pH 6.0) prior to IHC staining.



Confocal imaging of paraffin-embedded Human pancreas tissue using Somatostatin (SST) Rabbit mAb (A20617, dilution 1:200) followed by a further incubation with Cy3 Goat Anti-Rabbit IgG (H+L) (AS007, dilution 1:500) (Red). DAPI was used for nuclear staining (Blue). High pressure antigen retrieval performed with 0.01M Citrate Buffer (pH 6.0) prior to IF staining. Objective: 40x.