

A20577

Leader in Biomolecular Solutions for Life Science



CSA Rabbit pAb

Catalog No.: A20577

Basic Information

Observed MW

50kDa

Calculated MW

36kDa

Category

Polyclonal Antibody

Applications

WB, ELISA

Cross-Reactivity

Oryza sativa

Background

Transcription factor required for sugar partitioning from leaves to anthers during male reproductive development. Required for the production of functional pollen grains. Binds to the promoter of the anther-specific sugar transporter MST8 and regulates its expression. Regulates the expression of genes involved in sugar partitioning in flower, such as the sugar transporter SUT3, the invertase INV4, the UDP-glucose pyrophosphorylase UGP2 and the starch synthase WAXY

Recommended Dilutions

WB 1:500 - 1:2000

ELISA Recommended starting concentration is 1 µg/mL. Please optimize the concentration based on your specific assay requirements.

Immunogen Information

Gene ID

4325181

Swiss Prot

Immunogen

Recombinant fusion protein containing a sequence corresponding to amino acids 234-338 of Oryza sativa CSA. (Q5NBM8).

Synonyms

P0038F12.1; CSA

Contact



www.abclonal.com

Product Information

Source

Rabbit

Isotype

IgG

Purification

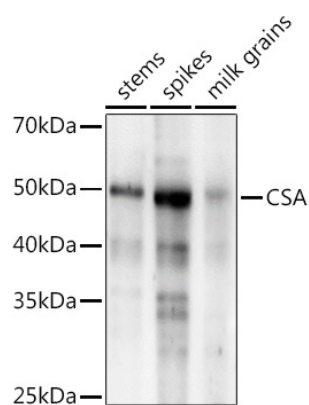
Affinity purification

Storage

Store at -20°C. Avoid freeze / thaw cycles.

Buffer: PBS with 0.01% thimerosal, 50% glycerol, pH 7.3.

Validation Data



Western blot analysis of extracts of various tissues from the japonica rice (*Oryza sativa* L.) variety Zhonghua 11, using CSA Rabbit pAb (A20577) at 1:1000 dilution.
Secondary antibody: HRP-conjugated Goat anti-Rabbit IgG (H+L) (AS014) at 1:10000 dilution.
Lysates/proteins: 25µg per lane.
Blocking buffer: 3% nonfat dry milk in TBST.
Detection: ECL Enhanced Kit (RM00021).
Exposure time: 120s.