

A20549

Leader in Biomolecular Solutions for Life Science



Caveolin-2 Rabbit pAb

Catalog No.: A20549

Basic Information

Observed MW

21kDa

Calculated MW

18kDa

Category

Polyclonal Antibody

Applications

WB,IHC-P,IF/ICC,ELISA

Cross-Reactivity

Human,Mouse,Rat

Background

The protein encoded by this gene is a major component of the inner surface of caveolae, small invaginations of the plasma membrane, and is involved in essential cellular functions, including signal transduction, lipid metabolism, cellular growth control and apoptosis. This protein may function as a tumor suppressor. This gene and related family member (CAV1) are located next to each other on chromosome 7, and express colocalizing proteins that form a stable hetero-oligomeric complex. Alternatively spliced transcript variants encoding different isoforms have been identified for this gene. Additional isoforms resulting from the use of alternate in-frame translation initiation codons have also been described, and shown to have preferential localization in the cell (PMID:11238462).

Recommended Dilutions

WB 1:500 - 1:1000

IHC-P 1:50 - 1:200

IF/ICC 1:50 - 1:200

ELISA Recommended starting concentration is 1 µg/mL. Please optimize the concentration based on your specific assay requirements.

Immunogen Information

Gene ID

858

Swiss Prot

P51636

Immunogen

Recombinant fusion protein containing a sequence corresponding to amino acids 1-65 of human CAV2 (NP_001224.1).

Synonyms

CAV; Caveolin-2

Product Information

Source

Rabbit

Isotype

IgG

Purification

Affinity purification

Storage

Store at -20°C. Avoid freeze / thaw cycles.

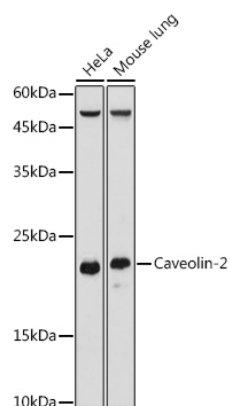
Buffer: PBS with 0.05% proclin300,50% glycerol,pH7.3.

Contact



www.abclonal.com

Validation Data



Western blot analysis of various lysates using Caveolin-2 Rabbit pAb (A20549) at 1:1000 dilution.

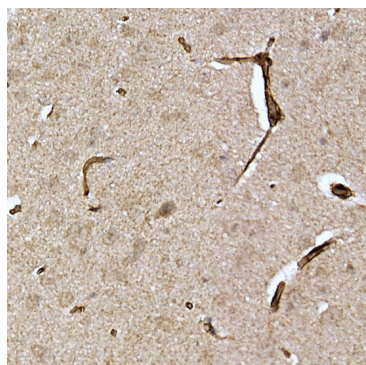
Secondary antibody: HRP-conjugated Goat anti-Rabbit IgG (H+L) (AS014) at 1:10000 dilution.

Lysates/proteins: 25µg per lane.

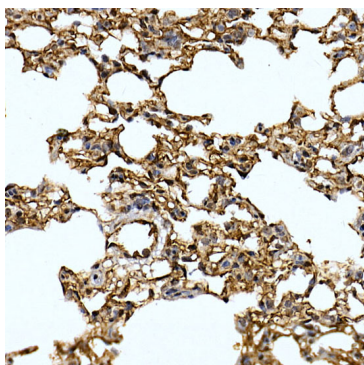
Blocking buffer: 3% nonfat dry milk in TBST.

Detection: ECL Basic Kit (RM00020).

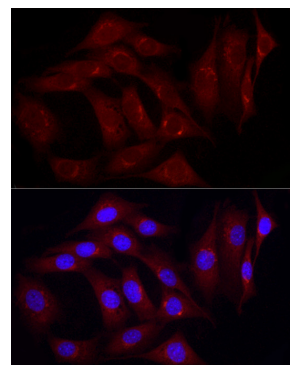
Exposure time: 1s.



Immunohistochemistry analysis of paraffin-embedded Rat brain using Caveolin-2 Rabbit pAb (A20549) at dilution of 1:100 (40x lens). High pressure antigen retrieval performed with 0.01M Citrate Bufferr (pH 6.0) prior to IHC staining.



Immunohistochemistry analysis of paraffin-embedded Rat lung using Caveolin-2 Rabbit pAb (A20549) at dilution of 1:100 (40x lens). High pressure antigen retrieval performed with 0.01M Citrate Bufferr (pH 6.0) prior to IHC staining.



Immunofluorescence analysis of NIH/3T3 cells using Caveolin-2 Rabbit pAb (A20549) at dilution of 1:100 (40x lens). Secondary antibody: Cy3-conjugated Goat anti-Rabbit IgG (H+L) (AS007) at 1:500 dilution. Blue: DAPI for nuclear staining.