

A20544

Leader in Biomolecular Solutions for Life Science



MLH1 Mouse mAb

Catalog No.: A20544

4 Publications

Basic Information

Observed MW

85kDa

Calculated MW

Category

Monoclonal Antibody

Applications

WB,IHC-P,ELISA

Cross-Reactivity

Human,Mouse

CloneNo number

AMC0417

Background

The protein encoded by this gene can heterodimerize with mismatch repair endonuclease PMS2 to form MutL alpha, part of the DNA mismatch repair system. When MutL alpha is bound by MutS beta and some accessory proteins, the PMS2 subunit of MutL alpha introduces a single-strand break near DNA mismatches, providing an entry point for exonuclease degradation. The encoded protein is also involved in DNA damage signaling and can heterodimerize with DNA mismatch repair protein MLH3 to form MutL gamma, which is involved in meiosis. This gene was identified as a locus frequently mutated in hereditary nonpolyposis colon cancer (HNPCC).

Recommended Dilutions

WB 1:500 - 1:2000

IHC-P 1:50 - 1:200

ELISA Recommended starting concentration is 1 µg/mL. Please optimize the concentration based on your specific assay requirements.

Immunogen Information

Gene ID

4292

Swiss Prot

P40692-1

Immunogen

Recombinant fusion protein containing a sequence corresponding to amino acids 1-210 of human MLH1 (NP_000240.1).

Synonyms

FCC2; COCA2; HNPCC; MLH-1; hMLH1; HNPCC2; LYNCH2; MMRC51; MLH1

Contact

 www.abclonal.com

Product Information

Source

Mouse

Isotype

IgG1,Kappa

Purification

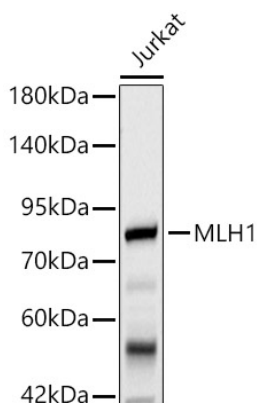
Affinity purification

Storage

Store at -20°C. Avoid freeze / thaw cycles.

Buffer: PBS with 0.05% proclin300,50% glycerol,pH7.3.

Validation Data



Western blot analysis of lysates from Jurkat cells, using MLH1 Mouse mAb (A20544) at 1:1000 dilution.

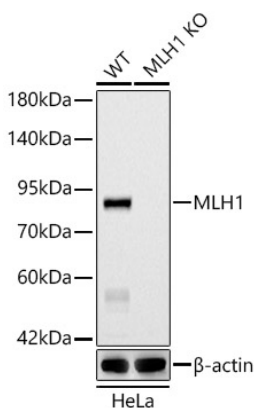
Secondary antibody: HRP-conjugated Goat anti-Mouse IgG (H+L) (AS003) at 1:10000 dilution.

Lysates/proteins: 25µg per lane.

Blocking buffer: 3% nonfat dry milk in TBST.

Detection: ECL Basic Kit (RM00020).

Exposure time: 90s.



Western blot analysis of lysates from wild type (WT) and MLH1 knockout (KO) HeLa(KO) cells, using MLH1 Mouse mAb (A20544) at 1:1000 dilution.

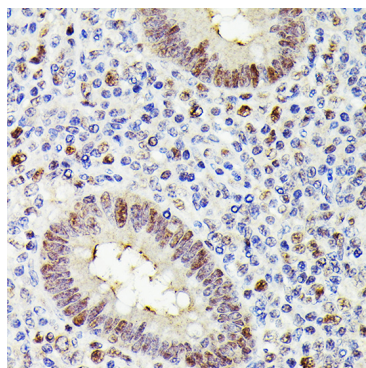
Secondary antibody: HRP-conjugated Goat anti-Mouse IgG (H+L) (AS003) at 1:10000 dilution.

Lysates/proteins: 25ug per lane.

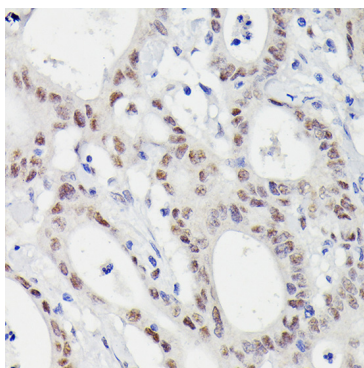
Blocking buffer: 3% nonfat dry milk in TBST.

Detection: ECL Basic Kit (RM00020).

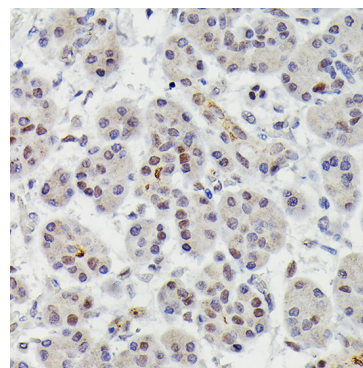
Exposure time: 180s.



Immunohistochemistry analysis of paraffin-embedded Human appendix using MLH1 Mouse mAb (A20544) at dilution of 1:200 (40x lens). High pressure antigen retrieval performed with 0.01M Citrate Bufferr (pH 6.0) prior to IHC staining.



Immunohistochemistry analysis of paraffin-embedded Human colon carcinoma using MLH1 Mouse mAb (A20544) at dilution of 1:200 (40x lens). High pressure antigen retrieval performed with 0.01M Citrate Bufferr (pH 6.0) prior to IHC staining.



Immunohistochemistry analysis of paraffin-embedded Human pancreas using MLH1 Mouse mAb (A20544) at dilution of 1:200 (40x lens). High pressure antigen retrieval performed with 0.01M Citrate Bufferr (pH 6.0) prior to IHC staining.