

A20496

Leader in Biomolecular Solutions for Life Science



www.abclonal.com

ABCA8A Rabbit pAb

Catalog No.: A20496

3 Publications

Basic Information

Observed MW

180-250kDa

Calculated MW

184kDa

Category

Polyclonal Antibody

Applications

WB,IHC-P,ELISA

Cross-Reactivity

Human,Mouse,Rat

Background

Predicted to enable ABC-type xenobiotic transporter activity and lipid transporter activity. Predicted to be involved in several processes, including cholesterol efflux; positive regulation of cholesterol efflux; and sphingomyelin biosynthetic process. Predicted to be located in endoplasmic reticulum and plasma membrane. Predicted to be active in intracellular membrane-bounded organelle. Is expressed in telencephalon. Orthologous to human ABCA8 (ATP binding cassette subfamily A member 8).

Recommended Dilutions

WB 1:500 - 1:1000

IHC-P 1:50 - 1:200

ELISA Recommended starting concentration is 1 µg/mL. Please optimize the concentration based on your specific assay requirements.

Immunogen Information

Gene ID

217258

Swiss Prot

Q8K442

Immunogen

Recombinant protein (or fragment). This information is considered to be commercially sensitive.

Synonyms

Contact



www.abclonal.com

Product Information

Source

Rabbit

Isotype

IgG

Purification

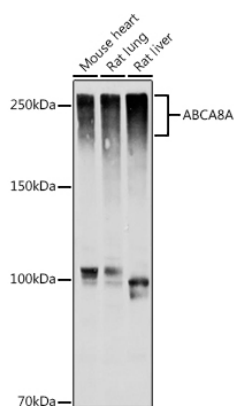
Affinity purification

Storage

Store at -20°C. Avoid freeze / thaw cycles.

Buffer: PBS containing 50% glycerol, preserved with proclin300 or sodium azide (as specified on the Certificate of Analysis), pH 7.3.

Validation Data



Western blot analysis of various lysates using ABCA8A Rabbit pAb (A20496) at 1:1000 dilution.

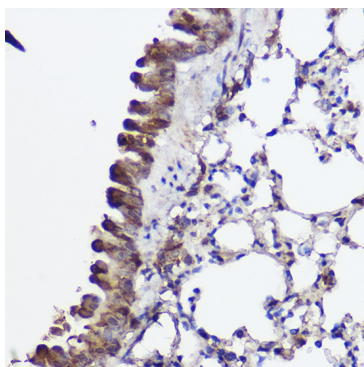
Secondary antibody: HRP-conjugated Goat anti-Rabbit IgG (H+L) (AS014) at 1:10000 dilution.

Lysates/proteins: 25µg per lane.

Blocking buffer: 3% nonfat dry milk in TBST.

Detection: ECL Basic Kit (RM00020).

Exposure time: 10s.



Immunohistochemistry analysis of paraffin-embedded Mouse lung using ABCA8A Rabbit pAb (A20496) at dilution of 1:100 (40x lens). High pressure antigen retrieval performed with 0.01M Citrate buffer (pH 6.0) prior to IHC staining.