

A20486

Leader in Biomolecular Solutions for Life Science



TASL Rabbit pAb

Catalog No.: A20486

1 Publications

Basic Information

Observed MW

35kDa

Calculated MW

34kDa

Category

Polyclonal Antibody

Applications

WB,IHC-P,ELISA

Cross-Reactivity

Human,Mouse

Background

Involved in positive regulation of innate immune response; positive regulation of toll-like receptor signaling pathway; and regulation of lysosomal lumen pH. Located in endolysosome membrane.

Recommended Dilutions

WB 1:500 - 1:1000

IHC-P 1:50 - 1:200

ELISA Recommended starting concentration is 1 µg/mL. Please optimize the concentration based on your specific assay requirements.

Immunogen Information

Gene ID

80231

Swiss Prot

Q9HAI6

Immunogen

Recombinant protein (or fragment). This information is considered to be commercially sensitive.

Synonyms

CXorf21; TASL

Contact

 www.abclonal.com

Product Information

Source

Rabbit

Isotype

IgG

Purification

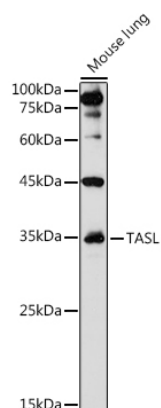
Affinity purification

Storage

Store at -20°C. Avoid freeze / thaw cycles.

Buffer: PBS containing 50% glycerol, preserved with proclin300 or sodium azide (as specified on the Certificate of Analysis), pH 7.3.

Validation Data



Western blot analysis of lysates from Mouse lung, using TASL Rabbit pAb (A20486) at 1:1000 dilution.

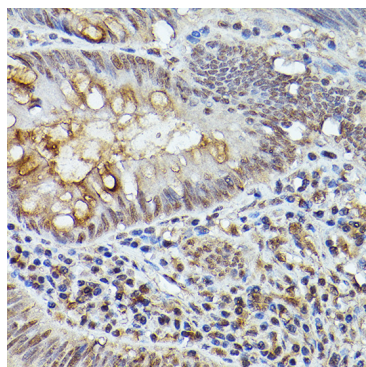
Secondary antibody: HRP-conjugated Goat anti-Rabbit IgG (H+L) (AS014) at 1:10000 dilution.

Lysates/proteins: 25µg per lane.

Blocking buffer: 3% nonfat dry milk in TBST.

Detection: ECL Basic Kit (RM00020).

Exposure time: 90s.



Immunohistochemistry analysis of paraffin-embedded Human colon carcinoma using TASL Rabbit pAb (A20486) at dilution of 1:50 (40x lens). High pressure antigen retrieval performed with 0.01M Citrate buffer (pH 6.0) prior to IHC staining.