

A20458

Leader in Biomolecular Solutions for Life Science



PPP1R3C Rabbit pAb

Catalog No.: A20458

Basic Information

Observed MW

Refer to figures

Calculated MW

36kDa

Category

Polyclonal Antibody

Applications

IHC-P,IF/ICC,ELISA

Cross-Reactivity

Human,Mouse,Rat

Background

This gene encodes a carbohydrate binding protein that is a subunit of the protein phosphatase 1 (PP1) complex. PP1 catalyzes reversible protein phosphorylation, which is important in a wide range of cellular activities. The encoded protein affects glycogen biosynthesis by activating glycogen synthase and limiting glycogen breakdown by reducing glycogen phosphorylase activity. DNA hypermethylation of this gene has been found in colorectal cancer patients. The encoded protein also interacts with the laforin protein, which is a protein tyrosine phosphatase implicated in Lafora disease.

Recommended Dilutions

IHC-P	1:50 - 1:200
IF/ICC	1:50 - 1:200

Immunogen Information

Gene ID

5507

Swiss Prot

Q9UQK1

Immunogen

Recombinant fusion protein containing a sequence corresponding to amino acids 1-150 of human PPP1R3C (NP_005389.1).

Synonyms

PTG; PPP1R5; PPP1R3C

Contact



www.abclonal.com

Product Information

Source

Rabbit

Isotype

IgG

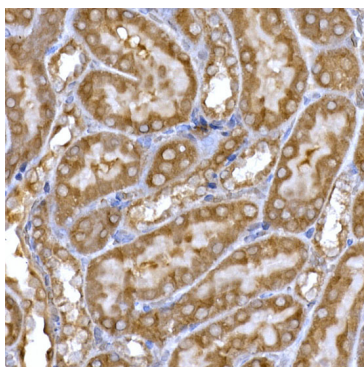
Purification

Affinity purification

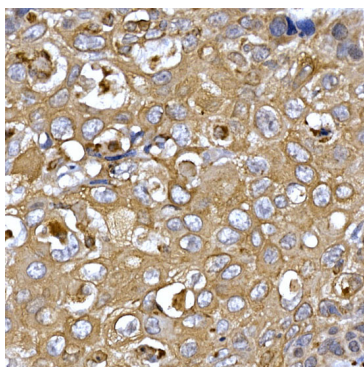
Storage

Store at -20°C. Avoid freeze / thaw cycles.

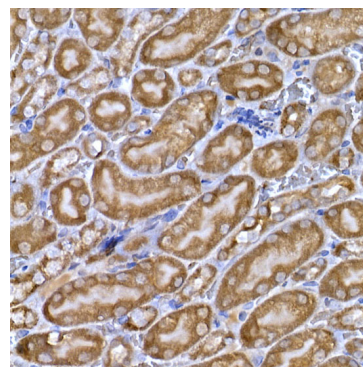
Buffer: PBS with 0.05% proclin300,50% glycerol,pH7.3.



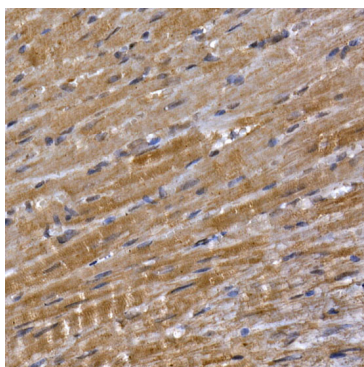
Immunohistochemistry analysis of paraffin-embedded Rat kidney using PPP1R3C Rabbit pAb (A20458) at dilution of 1:50 (40x lens). Perform high pressure antigen retrieval with 10 mM citrate buffer pH 6.0 before commencing with IHC staining protocol.



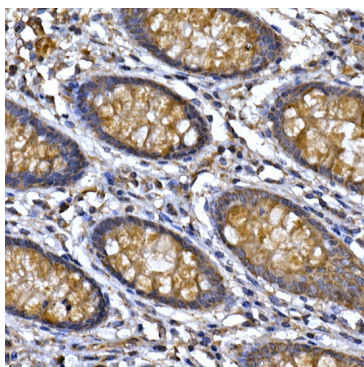
Immunohistochemistry analysis of paraffin-embedded human esophageal cancer using PPP1R3C Rabbit pAb (A20458) at dilution of 1:50 (40x lens). Perform high pressure antigen retrieval with 10 mM citrate buffer pH 6.0 before commencing with IHC staining protocol.



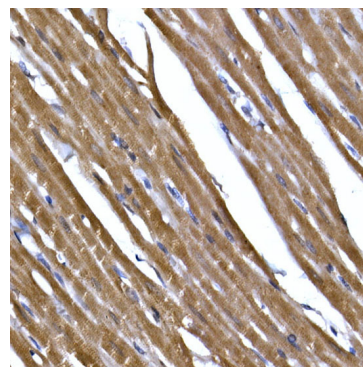
Immunohistochemistry analysis of paraffin-embedded Mouse kidney using PPP1R3C Rabbit pAb (A20458) at dilution of 1:50 (40x lens). Perform high pressure antigen retrieval with 10 mM citrate buffer pH 6.0 before commencing with IHC staining protocol.



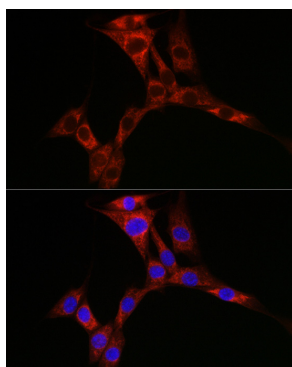
Immunohistochemistry analysis of paraffin-embedded Mouse heart using PPP1R3C Rabbit pAb (A20458) at dilution of 1:50 (40x lens). Perform high pressure antigen retrieval with 10 mM citrate buffer pH 6.0 before commencing with IHC staining protocol.



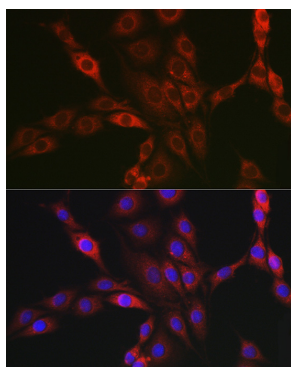
Immunohistochemistry analysis of paraffin-embedded human colon using PPP1R3C Rabbit pAb (A20458) at dilution of 1:50 (40x lens). Perform high pressure antigen retrieval with 10 mM citrate buffer pH 6.0 before commencing with IHC staining protocol.



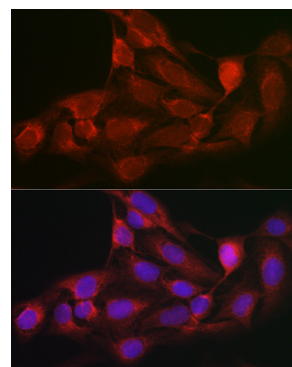
Immunohistochemistry analysis of paraffin-embedded Rat heart using PPP1R3C Rabbit pAb (A20458) at dilution of 1:50 (40x lens). Perform high pressure antigen retrieval with 10 mM citrate buffer pH 6.0 before commencing with IHC staining protocol.



Immunofluorescence analysis of NIH/3T3 cells using PPP1R3C Rabbit pAb (A20458) at dilution of 1:50 (40x lens). Secondary antibody: Cy3 Goat Anti-Rabbit IgG (H+L) (AS007) at



Immunofluorescence analysis of PC-12 cells using PPP1R3C Rabbit pAb (A20458) at dilution of 1:50 (40x lens). Secondary antibody: Cy3 Goat Anti-Rabbit IgG (H+L) (AS007) at



Immunofluorescence analysis of U2OS cells using PPP1R3C Rabbit pAb (A20458) at dilution of 1:50 (40x lens). Secondary antibody: Cy3 Goat Anti-Rabbit IgG (H+L) (AS007) at

Validation Data

1:500 dilution. Blue: DAPI for nuclear staining.

1:500 dilution. Blue: DAPI for nuclear staining.

1:500 dilution. Blue: DAPI for nuclear staining.