

A20457SP

Leader in Biomolecular Solutions for Life Science



NDUFB8 Rabbit pAb

Catalog No.: A20457SP **3 Publications**

Basic Information

Observed MW

20 kDa

Calculated MW

22 kDa/20 kDa/18 kDa

Category

Polyclonal Antibody

Applications

WB,IHC-P,IF/ICC,ELISA

Cross-Reactivity

Human,Mouse,Rat

Background

Involved in mitochondrial respiratory chain complex I assembly. Located in endoplasmic reticulum and mitochondrion. Part of mitochondrial respiratory chain complex I. Implicated in nuclear type mitochondrial complex I deficiency 32. Biomarker of Alzheimer's disease and Parkinson's disease.

Recommended Dilutions

WB 1:1000 - 1:5000

IF/ICC 1:100 - 1:200

IHC-P 1:100 - 1:400

ELISA Recommended starting concentration is 1 µg/mL. Please optimize the concentration based on your specific assay requirements. For high-ratio antibody dilutions (≥1:10000)

Immunogen Information

Gene ID

4714

Swiss Prot

O95169

Immunogen

This information is considered to be commercially sensitive.

Synonyms

ASHI; CI-ASHI; MC1DN32; NDUFB8

Product Information

Source

Rabbit

Isotype

IgG

Purification

Affinity purification

Storage

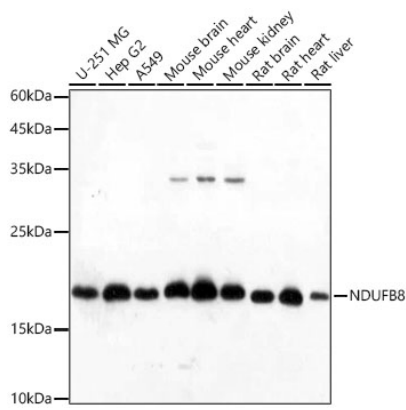
Store at -20°C. Avoid freeze / thaw cycles.

Buffer: PBS, pH 7.3, containing 50% glycerol. Preserved with Proclin300 or sodium azide. May contain 0.05% BSA as specified on the Certificate of Analysis.

Contact

 www.abclonal.com

Validation Data



Western blot analysis of various lysates using NDUFB8 Rabbit pAb (A20457SP) at 1:1000 dilution incubated overnight at 4°C.

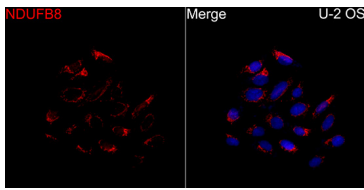
Secondary antibody: HRP-conjugated Goat anti-Rabbit IgG (H+L) (AS014) at 1:10000 dilution.

Lysates/proteins: 25 µg per lane.

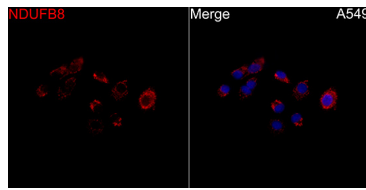
Blocking buffer: 3% nonfat dry milk in TBST.

Detection: ECL Basic Kit (RM00020).

Exposure time: 1 s.



Immunofluorescence analysis of U-2 OS cells using NDUFB8 Rabbit pAb (A20457SP) at a dilution of 1:100 (40x lens). Secondary antibody: Cy3-conjugated Goat anti-Rabbit IgG (H+L) (AS007) at 1:500 dilution. Blue: DAPI for nuclear staining.



Immunofluorescence analysis of A549 cells using NDUFB8 Rabbit pAb (A20457SP) at a dilution of 1:100 (40x lens). Secondary antibody: Cy3-conjugated Goat anti-Rabbit IgG (H+L) (AS007) at 1:500 dilution. Blue: DAPI for nuclear staining.