

A20419

Leader in Biomolecular Solutions for Life Science



NKX6-1 Rabbit pAb

Catalog No.: A20419

1 Publications

Basic Information

Observed MW

45kDa/46kDa/45-52kDa

Calculated MW

38kDa

Category

Polyclonal Antibody

Applications

WB,IHC-P,ELISA

Cross-Reactivity

Human,Mouse,Rat

Background

In the pancreas, NKX6.1 is required for the development of beta cells and is a potent bifunctional transcription regulator that binds to AT-rich sequences within the promoter region of target genes Iype et al. (2004) [PubMed 15056733].

Recommended Dilutions

WB 1:500 - 1:1000

IHC-P 1:50 - 1:200

ELISA Recommended starting concentration is 1 µg/mL. Please optimize the concentration based on your specific assay requirements.

Immunogen Information

Gene ID

4825

Swiss Prot

P78426

Immunogen

A synthetic peptide corresponding to a sequence within amino acids 1-100 of human NKX6-1 (NP_006159.2).

Synonyms

NKX6A; NKX6.1; NKX6-1

Contact



www.abclonal.com

Product Information

Source

Rabbit

Isotype

IgG

Purification

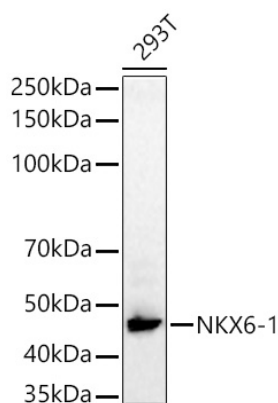
Affinity purification

Storage

Store at -20°C. Avoid freeze / thaw cycles.

Buffer: PBS with 0.09% Sodium azide,50% glycerol,pH7.3.

Validation Data



Western blot analysis of lysates from 293T cells using NKX6-1 Rabbit pAb (A20419) at 1:1000 dilution incubated overnight at 4°C.

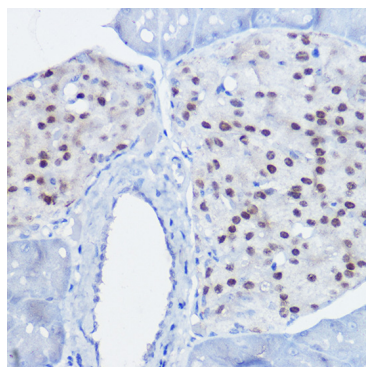
Secondary antibody: HRP-conjugated Goat anti-Rabbit IgG (H+L) (AS014) at 1:10000 dilution.

Lysates/proteins: 25 µg per lane.

Blocking buffer: 3% nonfat dry milk in TBST.

Detection: ECL Basic Kit (RM00020).

Exposure time: 90s.



Immunohistochemistry analysis of paraffin-embedded Mouse pancreas using NKX6-1 Rabbit pAb (A20419) at dilution of 1:50 (40x lens). High pressure antigen retrieval performed with 0.01M Citrate Bufferr (pH 6.0) prior to IHC staining.