

A20365

Leader in Biomolecular Solutions for Life Science



TET2 Rabbit pAb

Catalog No.: A20365

Basic Information

Observed MW

280kDa

Calculated MW

212kDa

Category

Polyclonal Antibody

Applications

WB,IF/ICC,ELISA

Cross-Reactivity

Human,Mouse,Rat

Background

Enables methylcytosine dioxygenase activity. Involved in cellular protein modification process; myeloid cell differentiation; and positive regulation of transcription by RNA polymerase II. Acts upstream of or within several processes, including DNA demethylation; animal organ development; and hematopoietic stem cell homeostasis. Predicted to be located in nucleoplasm. Predicted to be active in nucleus. Is expressed in several structures, including brain; extraembryonic component; lower urogenital tract; reproductive system; and urethra epithelium. Human ortholog(s) of this gene implicated in gastrointestinal system cancer (multiple); hematologic cancer (multiple); lung non-small cell carcinoma; and primary immunodeficiency disease. Orthologous to human TET2 (tet methylcytosine dioxygenase 2).

Recommended Dilutions

WB 1:500 - 1:1000

IF/ICC 1:50 - 1:200

ELISA Recommended starting concentration is 1 µg/mL. Please optimize the concentration based on your specific assay requirements.

Immunogen Information

Gene ID

214133

Swiss Prot

Q4JK59

Immunogen

Recombinant protein (or fragment). This information is considered to be commercially sensitive.

Synonyms

Ayu17-449; mKIAA1546; E130014J05Rik; TET2

Contact

 www.abclonal.com

Product Information

Source

Rabbit

Isotype

IgG

Purification

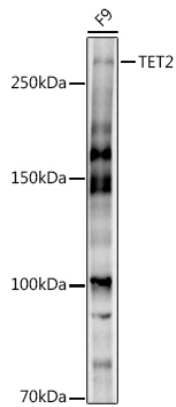
Affinity purification

Storage

Store at -20°C. Avoid freeze / thaw cycles.

Buffer: PBS with 0.05% proclin300, 50% glycerol, pH7.3.

Validation Data



Western blot analysis of lysates from F9 cells, using TET2 Rabbit pAb (A20365) at 1:1000 dilution.

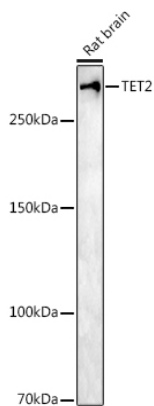
Secondary antibody: HRP-conjugated Goat anti-Rabbit IgG (H+L) (AS014) at 1:10000 dilution.

Lysates/proteins: 25µg per lane.

Blocking buffer: 3% nonfat dry milk in TBST.

Detection: ECL Basic Kit (RM00020).

Exposure time: 180s.



Western blot analysis of lysates from Rat brain, using TET2 Rabbit pAb (A20365) at 1:1000 dilution.

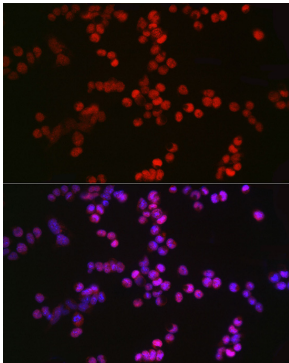
Secondary antibody: HRP-conjugated Goat anti-Rabbit IgG (H+L) (AS014) at 1:10000 dilution.

Lysates/proteins: 25µg per lane.

Blocking buffer: 3% nonfat dry milk in TBST.

Detection: ECL Enhanced Kit (RM00021).

Exposure time: 180s.



Immunofluorescence analysis of F9 cells using TET2 Rabbit pAb (A20365) at dilution of 1:100 (40x lens).

Secondary antibody: Cy3-conjugated Goat anti-Rabbit IgG (H+L) (AS007) at 1:500 dilution. Blue: DAPI for nuclear staining.