

A20324

Leader in Biomolecular Solutions for Life Science



SARS-CoV-2 ORF6 Rabbit pAb

Catalog No.: A20324

Basic Information

Observed MW

12kDa

Calculated MW

7kDa

Category

Polyclonal Antibody

Applications

WB, ELISA

Cross-Reactivity

SARS-CoV-2

Background

Severe acute respiratory syndrome coronavirus 2 (SARS-CoV-2) is an enveloped, positive-sense, single-stranded RNA virus that causes coronavirus disease 2019 (COVID-19). Virus particles include the RNA genetic material and structural proteins needed for invasion of host cells. Once inside the cell the infecting RNA is used to encode structural proteins that make up virus particles, nonstructural proteins that direct virus assembly, transcription, replication and host control and accessory proteins whose function has not been determined. ~ ORF6 encodes a viral accessory protein. Based on its similarity to other coronavirus proteins, ORF6 protein is thought to play a role in viral pathogenesis.

Recommended Dilutions

WB 1:500 - 1:1000

ELISA Recommended starting concentration is 1 µg/mL. Please optimize the concentration based on your specific assay requirements.

Immunogen Information

Gene ID

43740572

Swiss Prot

P0DTC6

Immunogen

Recombinant fusion protein containing a sequence corresponding to amino acids 1-61 of coronavirus ORF6 (YP_009724394.1).

Synonyms

Contact



www.abclonal.com

Product Information

Source

Rabbit

Isotype

IgG

Purification

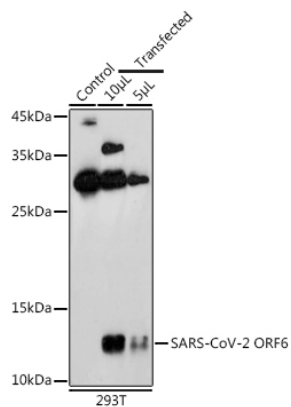
Affinity purification

Storage

Store at -20°C. Avoid freeze / thaw cycles.

Buffer: PBS with 0.05% proclin300, 50% glycerol, pH7.3.

Validation Data



Western blot analysis of lysates from 293T cells, using SARS-CoV-2 ORF6 Rabbit pAb (A20324) at 1:1000 dilution.

Secondary antibody: HRP-conjugated Goat anti-Rabbit IgG (H+L) (AS014) at 1:10000 dilution.

Lysates/proteins: 25µg per lane.

Blocking buffer: 3% nonfat dry milk in TBST.

Detection: ECL Basic Kit (RM00020).

Exposure time: 180s.