

A20278

Leader in Biomolecular Solutions for Life Science



Versican Rabbit pAb

Catalog No.: A20278

Basic Information

Observed MW

Refer to figures

Calculated MW

373kDa

Category

Polyclonal Antibody

Applications

IF/ICC,ELISA

Cross-Reactivity

Human,Mouse,Rat

Background

This gene is a member of the aggrecan/versican proteoglycan family. The protein encoded is a large chondroitin sulfate proteoglycan and is a major component of the extracellular matrix. This protein is involved in cell adhesion, proliferation, proliferation, migration and angiogenesis and plays a central role in tissue morphogenesis and maintenance. Mutations in this gene are the cause of Wagner syndrome type 1. Multiple transcript variants encoding different isoforms have been found for this gene.

Recommended Dilutions

IF/ICC 1:50 - 1:200

ELISA Recommended starting concentration is 1 µg/mL. Please optimize the concentration based on your specific assay requirements.

Immunogen Information

Gene ID

1462

Swiss Prot

P13611

Immunogen

Recombinant protein (or fragment). This information is considered to be commercially sensitive.

Synonyms

WGN; ERVR; GHAP; PG-M; WGN1; CSPG2; Versican

Contact

 www.abclonal.com

Product Information

Source

Rabbit

Isotype

IgG

Purification

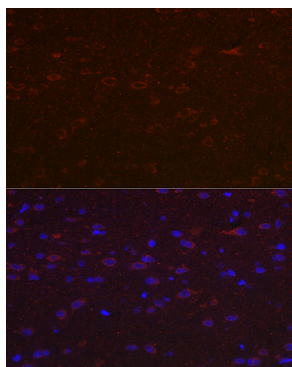
Affinity purification

Storage

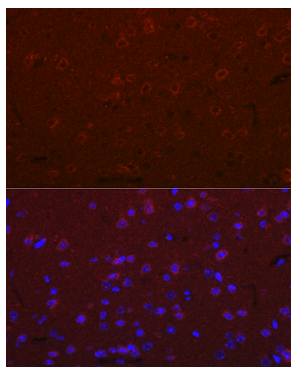
Store at -20°C. Avoid freeze / thaw cycles.

Buffer: PBS with 0.09% Sodium azide, 50% glycerol, pH 7.3.

Validation Data



Immunofluorescence analysis of paraffin-embedded rat brain using Versican Rabbit pAb (A20278) at dilution of 1:100 (40x lens).
Secondary antibody: Cy3-conjugated Goat anti-Rabbit IgG (H+L) (AS007) at 1:500 dilution. Blue: DAPI for nuclear staining.



Immunofluorescence analysis of paraffin-embedded mouse brain using Versican Rabbit pAb (A20278) at dilution of 1:100 (40x lens).
Secondary antibody: Cy3-conjugated Goat anti-Rabbit IgG (H+L) (AS007) at 1:500 dilution. Blue: DAPI for nuclear staining.