

A20255

Leader in Biomolecular Solutions for Life Science



BOP1 Rabbit pAb

Catalog No.: A20255

Basic Information

Observed MW

110kDa

Calculated MW

84kDa

Category

Polyclonal Antibody

Applications

WB,IHC-P,ELISA

Cross-Reactivity

Human,Mouse,Rat

Background

Enables RNA binding activity. Involved in regulation of cell cycle; regulation of signal transduction by p53 class mediator; and ribosomal large subunit biogenesis. Located in chromosome; nucleolus; and nucleoplasm. Part of PeBoW complex.

Recommended Dilutions

WB 1:500 - 1:1000

IHC-P 1:50 - 1:200

ELISA Recommended starting concentration is 1 µg/mL. Please optimize the concentration based on your specific assay requirements.

Immunogen Information

Gene ID

23246

Swiss Prot

Q14137

Immunogen

Recombinant fusion protein containing a sequence corresponding to amino acids 600-680 of human BOP1 (NP_056016.1).

Synonyms

BOP1

Contact



www.abclonal.com

Product Information

Source

Rabbit

Isotype

IgG

Purification

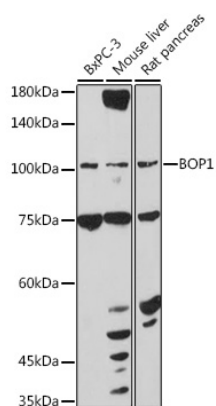
Affinity purification

Storage

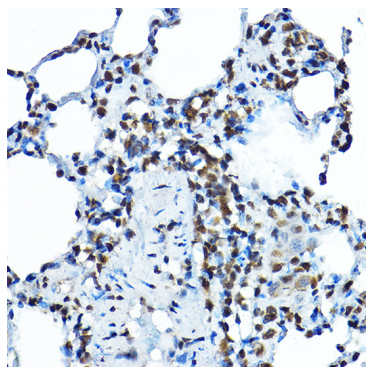
Store at -20°C. Avoid freeze / thaw cycles.

Buffer: PBS with 0.01% thimerosal, 50% glycerol, pH7.3.

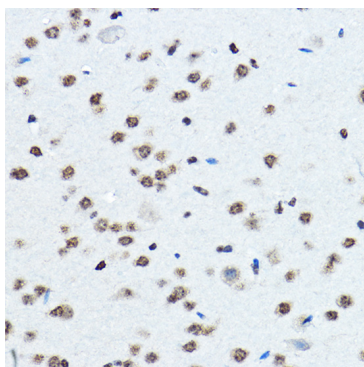
Validation Data



Western blot analysis of various lysates using BOP1 Rabbit pAb (A20255) at 1:1000 dilution.
Secondary antibody: HRP-conjugated Goat anti-Rabbit IgG (H+L) (AS014) at 1:10000 dilution.
Lysates/proteins: 25µg per lane.
Blocking buffer: 3% nonfat dry milk in TBST.
Detection: ECL Basic Kit (RM00020).
Exposure time: 30s.



Immunohistochemistry analysis of paraffin-embedded Rat lung using BOP1 Rabbit pAb (A20255) at dilution of 1:100 (40x lens). High pressure antigen retrieval performed with 0.01M Citrate Bufferr (pH 6.0) prior to IHC staining.



Immunohistochemistry analysis of paraffin-embedded Mouse brain using BOP1 Rabbit pAb (A20255) at dilution of 1:100 (40x lens). High pressure antigen retrieval performed with 0.01M Citrate Bufferr (pH 6.0) prior to IHC staining.