

A20237

Leader in Biomolecular Solutions for Life Science



LSM8 Rabbit pAb

Catalog No.: A20237

Basic Information

Observed MW

11kDa

Calculated MW

10kDa

Category

Polyclonal Antibody

Applications

WB, ELISA

Cross-Reactivity

Human, Mouse, Rat

Background

This gene encodes a member of the like-Sm family of proteins. The encoded protein consists of a closed barrel shape, made up of five anti-parallel beta strands and an alpha helix. This protein partners with six paralogs to form a heteroheptameric ring which transiently binds U6 small nuclear RNAs and is involved in the general maturation of RNA in the nucleus.

Recommended Dilutions

WB 1:500 - 1:1000

ELISA Recommended starting concentration is 1 µg/mL. Please optimize the concentration based on your specific assay requirements.

Immunogen Information

Gene ID

51691

Swiss Prot

O95777

Immunogen

Recombinant fusion protein containing a sequence corresponding to amino acids 1-96 of human LSM8 (NP_057284.1).

Synonyms

NAA38; LSM8

Contact

 www.abclonal.com

Product Information

Source

Rabbit

Isotype

IgG

Purification

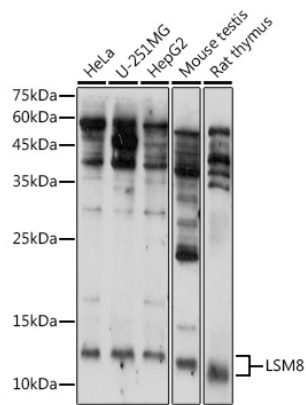
Affinity purification

Storage

Store at -20°C. Avoid freeze / thaw cycles.

Buffer: PBS with 0.01% thimerosal, 50% glycerol, pH7.3.

Validation Data



Western blot analysis of various lysates using LSM8 Rabbit pAb (A20237) at 1:1000 dilution.
Secondary antibody: HRP-conjugated Goat anti-Rabbit IgG (H+L) (AS014) at 1:10000 dilution.
Lysates/proteins: 25µg per lane.
Blocking buffer: 3% nonfat dry milk in TBST.
Detection: ECL Basic Kit (RM00020).
Exposure time: 60s.