

A20196

Leader in Biomolecular Solutions for Life Science



## MPC2 Rabbit pAb

Catalog No.: A20196

2 Publications

### Basic Information

#### Observed MW

14kDa

#### Calculated MW

14kDa

#### Category

Polyclonal Antibody

#### Applications

WB,IHC-P,ELISA

#### Cross-Reactivity

Mouse,Rat

### Background

Enables identical protein binding activity. Predicted to be involved in mitochondrial pyruvate transmembrane transport. Predicted to act upstream of or within mitochondrial acetyl-CoA biosynthetic process from pyruvate and positive regulation of insulin secretion involved in cellular response to glucose stimulus. Located in mitochondrion.

### Recommended Dilutions

**WB** 1:500 - 1:1000

**IHC-P** 1:50 - 1:200

**ELISA** Recommended starting concentration is 1 µg/mL. Please optimize the concentration based on your specific assay requirements.

### Immunogen Information

#### Gene ID

25874

#### Swiss Prot

O95563

#### Immunogen

Synthetic peptide. This information is considered to be commercially sensitive.

#### Synonyms

BRP44; SLC54A2; MPC2

### Contact

 [www.abclonal.com](http://www.abclonal.com)

### Product Information

#### Source

Rabbit

#### Isotype

IgG

#### Purification

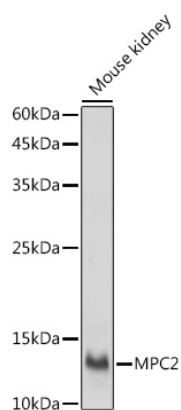
Affinity purification

#### Storage

Store at -20°C. Avoid freeze / thaw cycles.

Buffer: PBS containing 50% glycerol, preserved with proclin300 or sodium azide (as specified on the Certificate of Analysis), pH 7.3.

## Validation Data



Western blot analysis of lysates from Mouse kidney, using MPC2 Rabbit pAb (A20196) at 1:1000 dilution.

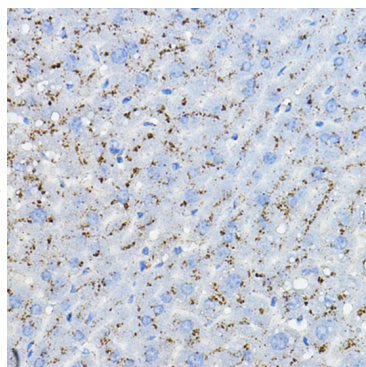
Secondary antibody: HRP-conjugated Goat anti-Rabbit IgG (H+L) (AS014) at 1:10000 dilution.

Lysates/proteins: 25µg per lane.

Blocking buffer: 3% nonfat dry milk in TBST.

Detection: ECL Basic Kit (RM00020).

Exposure time: 30s.



Immunohistochemistry analysis of paraffin-embedded Mouse liver using MPC2 Rabbit pAb (A20196) at dilution of 1:100 (40x lens). High pressure antigen retrieval performed with 0.01M Citrate buffer (pH 6.0) prior to IHC staining.