

A20125

Leader in Biomolecular Solutions for Life Science



cGAS Rabbit pAb

Catalog No.: A20125

1 Publications

Basic Information

Observed MW

Refer to figures

Calculated MW

59kDa

Category

Polyclonal Antibody

Applications

WB,IHC-P,ELISA

Cross-Reactivity

Human,Mouse,Rat

Background

Enables several functions, including 2',3'-cyclic GMP-AMP synthase activity; chromatin binding activity; and phosphatidylinositol-4,5-bisphosphate binding activity. Involved in several processes, including cellular response to exogenous dsRNA; positive regulation of intracellular signal transduction; and regulation of defense response. Located in several cellular components, including cytosol; nucleus; and site of double-strand break.

Recommended Dilutions

WB 1:500 - 1:2000

IHC-P 1:50 - 1:200

ELISA Recommended starting concentration is 1 µg/mL. Please optimize the concentration based on your specific assay requirements.

Immunogen Information

Gene ID

115004

Swiss Prot

Q8N884

Immunogen

Recombinant protein (or fragment). This information is considered to be commercially sensitive.

Synonyms

MB21D1; h-cGAS; C6orf150; cGAS

Contact

 www.abclonal.com

Product Information

Source

Rabbit

Isotype

IgG

Purification

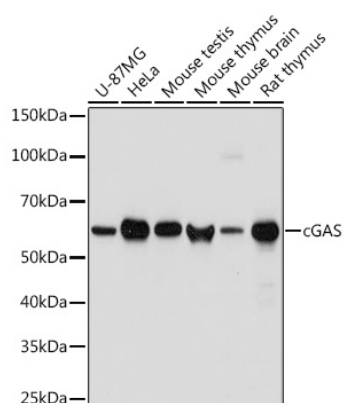
Affinity purification

Storage

Store at -20°C. Avoid freeze / thaw cycles.

Buffer: PBS with 0.02% sodium azide, 50% glycerol, pH 7.3.

Validation Data



Western blot analysis of various lysates using cGAS Rabbit pAb (A20125) at 1:1000 dilution.

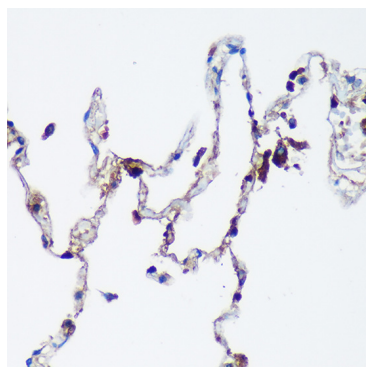
Secondary antibody: HRP-conjugated Goat anti-Rabbit IgG (H+L) (AS014) at 1:10000 dilution.

Lysates/proteins: 25µg per lane.

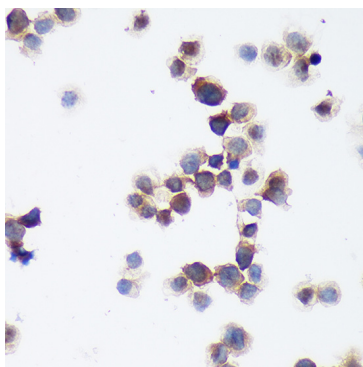
Blocking buffer: 3% nonfat dry milk in TBST.

Detection: ECL Basic Kit (RM00020).

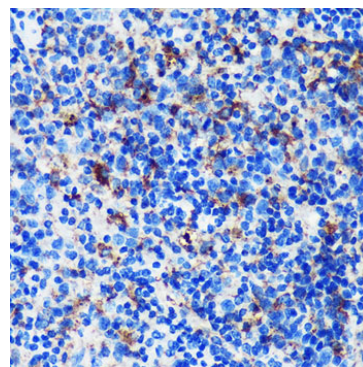
Exposure time: 1s.



Immunohistochemistry analysis of paraffin-embedded Human lung using cGAS Rabbit pAb (A20125) at dilution of 1:100 (40x lens). Microwave antigen retrieval performed with 0.01M PBS Buffer (pH 7.2) prior to IHC staining.



Immunohistochemistry analysis of paraffin-embedded THP-1 cells using cGAS Rabbit pAb (A20125) at dilution of 1:100 (40x lens). Microwave antigen retrieval performed with 0.01M PBS Buffer (pH 7.2) prior to IHC staining.



Immunohistochemistry analysis of paraffin-embedded Mouse spleen using cGAS Rabbit pAb (A20125) at dilution of 1:100 (40x lens). Microwave antigen retrieval performed with 0.01M PBS Buffer (pH 7.2) prior to IHC staining.