

A19971

Leader in Biomolecular Solutions for Life Science



[KO Validated] C21orf33 Rabbit pAb

Catalog No.: A19971 **KO Validated**

Basic Information

Observed MW

26kDa

Calculated MW

24kDa/28kDa

Category

Polyclonal Antibody

Applications

WB,ELISA

Cross-Reactivity

Human,Mouse,Rat

Background

This gene encodes a potential mitochondrial protein that is a member of the DJ-1/PfpI gene family. This protein is overexpressed in fetal Down syndrome brain. Alternate splicing results in multiple transcript variants.

Recommended Dilutions

WB 1:500 - 1:2000

Immunogen Information

Gene ID

8209

Swiss Prot

P30042

Immunogen

Recombinant fusion protein containing a sequence corresponding to amino acids 42-268 of human C21orf33 (NP_004640.4).

Synonyms

ES1; HES1; KNPH; KNPI; GT335; GATD3A; C21orf33; 33

Contact

 www.abclonal.com

Product Information

Source

Rabbit

Isotype

IgG

Purification

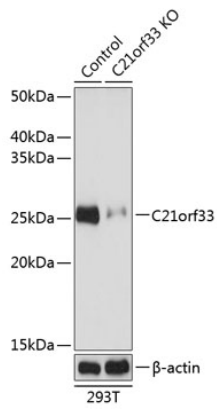
Affinity purification

Storage

Store at -20°C. Avoid freeze / thaw cycles.

Buffer: PBS with 0.01% thimerosal,50% glycerol,pH7.3.

Validation Data



Western blot analysis of lysates from wild type (WT) and C21orf33 knockout (KO) 293T cells, using [KO Validated] C21orf33 Rabbit pAb (A19971) at 1:1000 dilution. Secondary antibody: HRP Goat Anti-Rabbit IgG (H+L) (AS014) at 1:10000 dilution. Lysates/proteins: 25 μ g per lane. Blocking buffer: 3% nonfat dry milk in TBST. Detection: ECL Basic Kit (RM00020). Exposure time: 1s.