

A19827

Leader in Biomolecular Solutions for Life Science



# Cytokeratin 6 (KRT6) Rabbit mAb

Catalog No.: A19827 **Recombinant**

## Basic Information

### Observed MW

60kDa

### Calculated MW

60kDa

### Category

SMab Recombinant Monoclonal  
Antibody

### Applications

WB,IHC-P,ELISA

### Cross-Reactivity

Human

### CloneNo number

ARC2352

## Background

Keratins are intermediate filament proteins responsible for the structural integrity of epithelial cells and are subdivided into epithelial keratins and hair keratins. The type II keratins are clustered in a region of chromosome 12q13.

## Recommended Dilutions

**WB** 1:500 - 1:2000

**IHC-P** 1:50 - 1:200

**ELISA** Recommended starting concentration is 1 µg/mL. Please optimize the concentration based on your specific assay requirements.

## Immunogen Information

### Gene ID

286887

### Swiss Prot

P48668

### Immunogen

A synthetic peptide corresponding to a sequence within amino acids 465-564 of human Cytokeratin 6 (KRT6) (P48668).

### Synonyms

K6E; KRT6E; PPKNEFD; Cytokeratin 6 (KRT6)

## Contact

 [www.abclonal.com](http://www.abclonal.com)

## Product Information

### Source

Rabbit

### Isotype

IgG

### Purification

Affinity purification

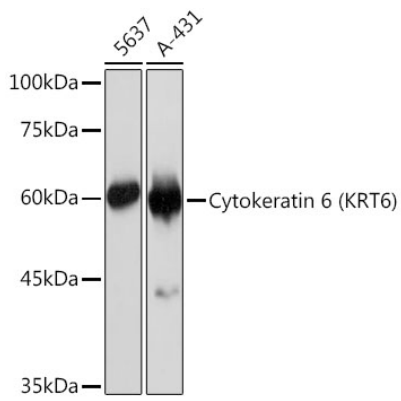
### Storage

Store at -20°C. Avoid freeze / thaw cycles.

Buffer: PBS with 0.02% sodium azide,0.05% BSA,50% glycerol,pH7.3.

## Validation Data

---



Western blot analysis of various lysates using Cytokeratin 6 (KRT6) Rabbit mAb (A19827) at 1:1000 dilution.

Secondary antibody: HRP-conjugated Goat anti-Rabbit IgG (H+L) (AS014) at 1:10000 dilution.

Lysates/proteins: 25µg per lane.

Blocking buffer: 3% nonfat dry milk in TBST.

Detection: ECL Basic Kit (RM00020).

Exposure time: 1s.