

A19817

Leader in Biomolecular Solutions for Life Science



# GSC Rabbit mAb

Catalog No.: A19817 **Recombinant**

## Basic Information

### Observed MW

28kDa

### Calculated MW

28kDa

### Category

SMab Recombinant Monoclonal Antibody

### Applications

WB, ELISA

### Cross-Reactivity

Human, Mouse

### CloneNo number

ARC2343

## Background

This gene encodes a member of the bicoid subfamily of the paired (PRD) homeobox family of proteins. The encoded protein acts as a transcription factor and may be autoregulatory. A similar protein in mice plays a role in craniofacial and rib cage development during embryogenesis.

## Recommended Dilutions

WB 1:500 - 1:2000

## Immunogen Information

### Gene ID

145258

### Swiss Prot

P56915

### Immunogen

A synthetic peptide corresponding to a sequence within amino acids 1-100 of human GSC (P56915).

### Synonyms

SAMS; GSC

## Contact



[www.abclonal.com](http://www.abclonal.com)

## Product Information

### Source

Rabbit

### Isotype

IgG

### Purification

Affinity purification

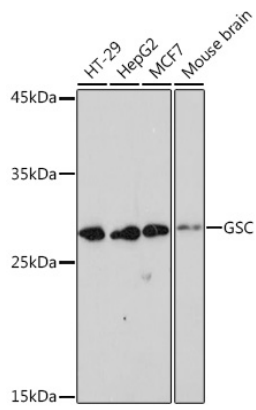
### Storage

Store at -20°C. Avoid freeze / thaw cycles.

Buffer: PBS with 0.02% sodium azide, 0.05% BSA, 50% glycerol, pH7.3.

## Validation Data

---



Western blot analysis of extracts of various cell lines, using GSC Rabbit mAb (A19817) at 1:1000 dilution.  
Secondary antibody: HRP Goat Anti-Rabbit IgG (H+L) (AS014) at 1:10000 dilution.  
Lysates/proteins: 25µg per lane.  
Blocking buffer: 3% nonfat dry milk in TBST.  
Detection: ECL Basic Kit (RM00020).  
Exposure time: 180s.