

A19776

Leader in Biomolecular Solutions for Life Science



AIF1/IBA1 Rabbit mAb

Catalog No.: A19776

Recombinant

49 Publications

Basic Information

Observed MW

17kDa

Calculated MW

17kDa

Category

SMab Recombinant Monoclonal
Antibody

Applications

WB,IHC-P,IF/ICC,ELISA

Cross-Reactivity

Human,Mouse,Rat

CloneNo number

ARC2301

Background

Enables actin filament binding activity and calcium ion binding activity. Involved in several processes, including Rac protein signal transduction; actin filament organization; and ruffle assembly. Acts upstream of or within actin filament bundle assembly. Located in several cellular components, including actin filament; phagocytic cup; and ruffle membrane. Is expressed in adrenal cortex; central nervous system; embryo mesenchyme; and retina. Human ortholog(s) of this gene implicated in type 1 diabetes mellitus. Orthologous to human AIF1 (allograft inflammatory factor 1).

Recommended Dilutions

WB 1:1000 - 1:4000

IHC-P 1:200 - 1:2000

IF/ICC 1:200 - 1:2000

ELISA Recommended starting concentration is 1 µg/mL. Please optimize the concentration based on your specific assay requirements.

Immunogen Information

Gene ID

11629

Swiss Prot

O70200(mouse),P55008(Human)

Immunogen

A synthetic peptide corresponding to a sequence within amino acids 1-100 of mouse AIF1/IBA1 (O70200).

Synonyms

G1; Iba1; AIF-1; D17H6S50E; AIF1/IBA1

Product Information

Source

Rabbit

Isotype

IgG

Purification

Affinity purification

Storage

Store at -20°C. Avoid freeze / thaw cycles.

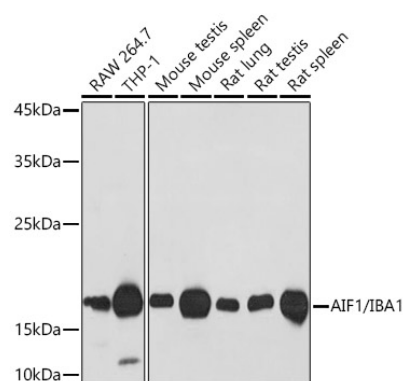
Buffer: PBS with 0.09% sodium azide,0.05% BSA,50% glycerol,pH7.3.

Contact



www.abclonal.com

Validation Data



Western blot analysis of various lysates using AIF1/IBA1 Rabbit mAb (A19776) at 1:1000 dilution.

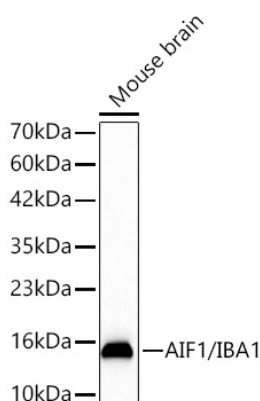
Secondary antibody: HRP-conjugated Goat anti-Rabbit IgG (H+L) (AS014) at 1:10000 dilution.

Lysates/proteins: 25µg per lane.

Blocking buffer: 3% nonfat dry milk in TBST.

Detection: ECL Basic Kit (RM00020).

Exposure time: 30s.



Western blot analysis of lysates from Mouse brain using AIF1/IBA1 Rabbit mAb (A19776) at 1:1000 dilution incubated overnight at 4°C.

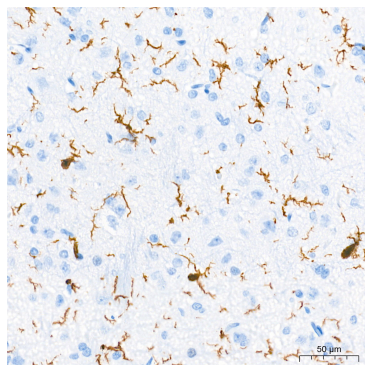
Secondary antibody: HRP-conjugated Goat anti-Rabbit IgG (H+L) (AS014) at 1:10000 dilution.

Lysates/proteins: 25 µg per lane.

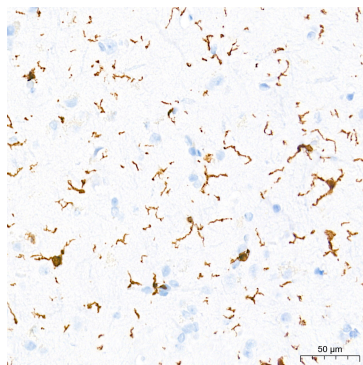
Blocking buffer: 3% nonfat dry milk in TBST.

Detection: ECL Basic Kit (RM00020).

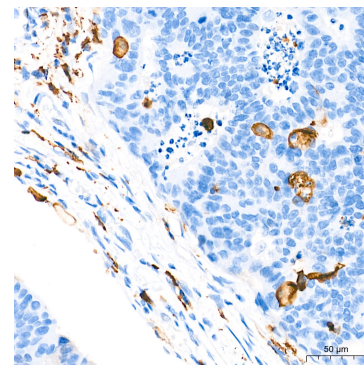
Exposure time: 45s.



Immunohistochemistry analysis of paraffin-embedded Rat brain tissue using AIF1/IBA1 Rabbit mAb (A19776) at a dilution of 1:20000 (40x lens). High pressure antigen retrieval performed with 0.01M Tris-EDTA Buffer (pH 9.0) prior to IHC staining.

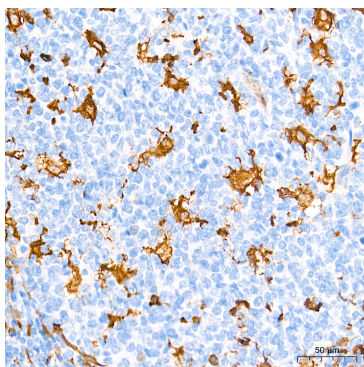


Immunohistochemistry analysis of paraffin-embedded Human brain tissue using AIF1/IBA1 Rabbit mAb (A19776) at a dilution of 1:20000 (40x lens). High pressure antigen retrieval performed with 0.01M Tris-EDTA Buffer (pH 9.0) prior to IHC staining.

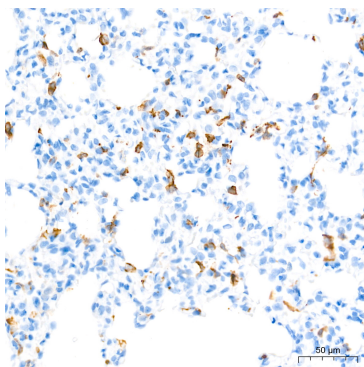


Immunohistochemistry analysis of paraffin-embedded Human colon carcinoma tissue using AIF1/IBA1 Rabbit mAb (A19776) at a dilution of 1:20000 (40x lens). High pressure antigen retrieval performed with 0.01M Tris-EDTA Buffer (pH 9.0) prior to IHC staining.

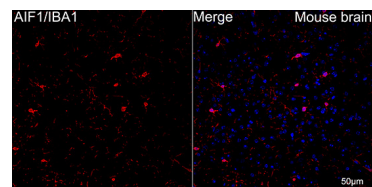
Validation Data



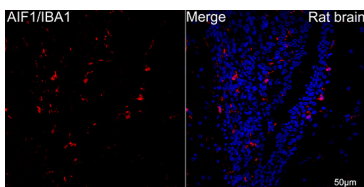
Immunohistochemistry analysis of paraffin-embedded Human tonsil tissue using AIF1/IBA1 Rabbit mAb (A19776) at a dilution of 1:20000 (40x lens). High pressure antigen retrieval performed with 0.01M Tris-EDTA Buffer (pH 9.0) prior to IHC staining.



Immunohistochemistry analysis of paraffin-embedded Rat lung tissue using AIF1/IBA1 Rabbit mAb (A19776) at a dilution of 1:20000 (40x lens). High pressure antigen retrieval performed with 0.01M Tris-EDTA Buffer (pH 9.0) prior to IHC staining.



Confocal imaging of paraffin-embedded Mouse brain using AIF1/IBA1 Rabbit mAb (A19776, dilution 1:200) followed by a further incubation with Cy3 Goat Anti-Rabbit IgG (H+L) (AS007, dilution 1:500) (Red). DAPI was used for nuclear staining (Blue). Objective: 40x. Perform microwave antigen retrieval with 0.01M citrate buffer (pH 6.0) prior to IF staining.



Confocal imaging of paraffin-embedded Rat brain using AIF1/IBA1 Rabbit mAb (A19776, dilution 1:200) followed by a further incubation with Cy3 Goat Anti-Rabbit IgG (H+L) (AS007, dilution 1:500) (Red). DAPI was used for nuclear staining (Blue). Objective: 40x. Perform microwave antigen retrieval with 0.01M citrate buffer (pH 6.0) prior to IF staining.