

A19727

Leader in Biomolecular Solutions for Life Science



Mammaglobin A Rabbit mAb

Catalog No.: A19727

Recombinant

Basic Information

Observed MW

10kDa

Calculated MW

10kDa

Category

SMab Recombinant Monoclonal
Antibody

Applications

WB,IHC-P,ELISA

Cross-Reactivity

Human

CloneNo number

ARC2255

Background

Predicted to be involved in androgen receptor signaling pathway. Predicted to be located in extracellular region. Predicted to be active in extracellular space.

Recommended Dilutions

WB 1:500 - 1:1000

IHC-P 1:50 - 1:200

ELISA Recommended starting concentration is 1 µg/mL. Please optimize the concentration based on your specific assay requirements.

Immunogen Information

Gene ID

4250

Swiss Prot

Q13296

Immunogen

Recombinant fusion protein containing a sequence corresponding to amino acids 1-93 of human Mammaglobin A (Q13296).

Synonyms

MGB1; UGB2; PSBP1; Mammaglobin A

Contact

 www.abclonal.com

Product Information

Source

Rabbit

Isotype

IgG

Purification

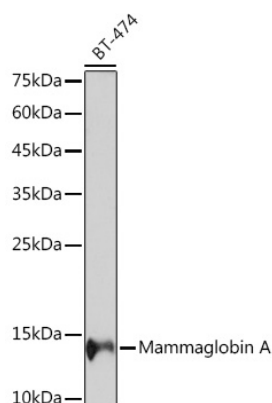
Affinity purification

Storage

Store at -20°C. Avoid freeze / thaw cycles.

Buffer: PBS with 0.02% sodium azide,0.05% BSA,50% glycerol,pH7.3.

Validation Data



Western blot analysis of lysates from BT-474 cells, using Mammaglobin A Rabbit mAb (A19727) at 1:1000 dilution.

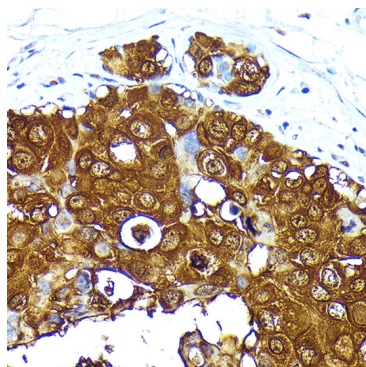
Secondary antibody: HRP-conjugated Goat anti-Rabbit IgG (H+L) (AS014) at 1:10000 dilution.

Lysates/proteins: 25µg per lane.

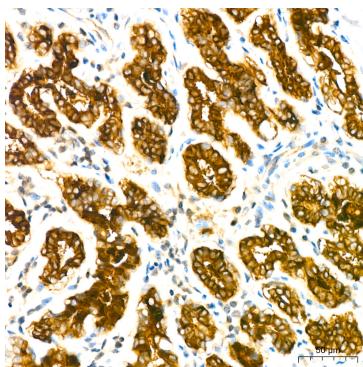
Blocking buffer: 3% nonfat dry milk in TBST.

Detection: ECL Basic Kit (RM00020).

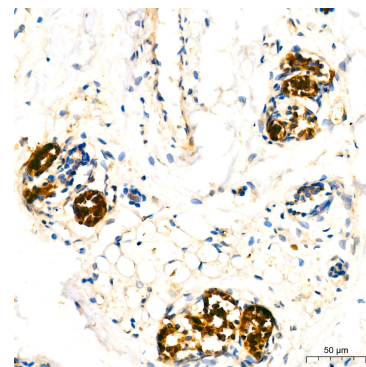
Exposure time: 60s.



Immunohistochemistry analysis of paraffin-embedded Human breast cancer using Mammaglobin A Rabbit mAb (A19727) at dilution of 1:200 (40x lens). High pressure antigen retrieval performed with 0.01M Tris/EDTA Buffer (pH 9.0) prior to IHC staining.



Immunohistochemistry analysis of paraffin-embedded Human breast using Mammaglobin A Rabbit mAb (A19727) at dilution of 1:200 (40x lens). High pressure antigen retrieval performed with 0.01M Tris/EDTA Buffer (pH 9.0) prior to IHC staining.



Immunohistochemistry analysis of paraffin-embedded Human skin using Mammaglobin A Rabbit mAb (A19727) at dilution of 1:200 (40x lens). High pressure antigen retrieval performed with 0.01M Tris/EDTA Buffer (pH 9.0) prior to IHC staining.