

A19654

Leader in Biomolecular Solutions for Life Science



## [KO Validated] Caspase-3 Rabbit mAb

Catalog No.: A19654

**KO** Validated

Recombinant

108 Publications

### Basic Information

#### Observed MW

17kDa/32kDa/35kDa/17kDa/32kDa/32kDa

#### Calculated MW

32kDa

#### Category

SMab Recombinant Monoclonal Antibody

#### Applications

WB,ELISA

#### Cross-Reactivity

Human,Mouse

#### CloneNo number

ARC0133

### Background

The protein encoded by this gene is a cysteine-aspartic acid protease that plays a central role in the execution-phase of cell apoptosis. The encoded protein cleaves and inactivates poly(ADP-ribose) polymerase while it cleaves and activates sterol regulatory element binding proteins as well as caspases 6, 7, and 9. This protein itself is processed by caspases 8, 9, and 10. It is the predominant caspase involved in the cleavage of amyloid-beta 4A precursor protein, which is associated with neuronal death in Alzheimer's disease.

### Recommended Dilutions

**WB** 1:1000 - 1:2000

**ELISA** Recommended starting concentration is 1 µg/mL. Please optimize the concentration based on your specific assay requirements.

### Immunogen Information

#### Gene ID

836

#### Swiss Prot

P42574

#### Immunogen

Recombinant fusion protein containing a sequence corresponding to amino acids 29-175 of human Caspase-3 (P42574).

#### Synonyms

CPP32; SCA-1; CPP32B; -3

### Contact



[www.abclonal.com](http://www.abclonal.com)

### Product Information

#### Source

Rabbit

#### Isotype

IgG

#### Purification

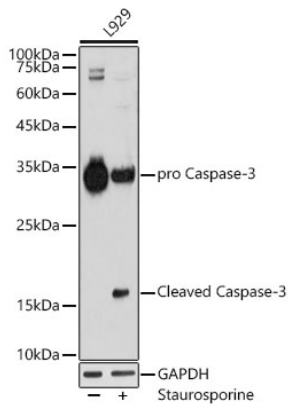
Affinity purification

#### Storage

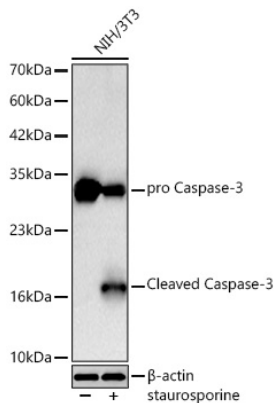
Store at -20°C. Avoid freeze / thaw cycles.

Buffer: PBS with 0.09% Sodium azide,0.05% BSA,50% glycerol,pH7.3.

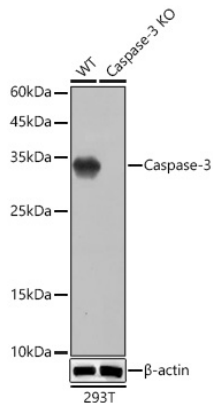
## Validation Data



Western blot analysis of lysates from L929 cells, using [KO Validated] active + pro Caspase-3 Rabbit mAb (A19654) at 1:1000 dilution. L929 cells were treated by staurosporine (1  $\mu$ M) for 3 hour.  
Secondary antibody: HRP-conjugated Goat anti-Rabbit IgG (H+L) (AS014) at 1:10000 dilution.  
Lysates/proteins: 25  $\mu$ g per lane.  
Blocking buffer: 3% nonfat dry milk in TBST.  
Detection: ECL Basic Kit (RM00020).  
Exposure time: 180s.



Western blot analysis of lysates from NIH/3T3 cells using Caspase-3 Rabbit mAb (A19654) at 1:1000 dilution incubated overnight at 4°C. NIH/3T3 cells were treated by staurosporine (1  $\mu$ M) for 3 hour.  
Secondary antibody: HRP-conjugated Goat anti-Rabbit IgG (H+L) (AS014) at 1:10000 dilution.  
Lysates/proteins: 30  $\mu$ g per lane.  
Blocking buffer: 3 % nonfat dry milk in TBST.  
Detection: ECL Basic Kit (RM00020).  
Exposure time: 90s.



Western blot analysis of lysates from wild type (WT) and Caspase-3 knockout (KO) 293T cells using [KO Validated] Caspase-3 Rabbit mAb (A19654) at 1:1000 dilution incubated overnight at 4°C.  
Secondary antibody: HRP-conjugated Goat anti-Rabbit IgG (H+L) (AS014) at 1:10000 dilution.  
Lysates/proteins: 25  $\mu$ g per lane.  
Blocking buffer: 3% nonfat dry milk in TBST.  
Detection: ECL Basic Kit (RM00020).  
Exposure time: 10s.