

A19593

Leader in Biomolecular Solutions for Life Science



## BNIP3 Rabbit mAb

Catalog No.: A19593

Recombinant

8 Publications

### Basic Information

#### Observed MW

22-28kDa/50-55kDa

#### Calculated MW

22kDa

#### Category

SMab Recombinant Monoclonal  
Antibody

#### Applications

WB,IHC-P,ELISA

#### Cross-Reactivity

Human,Mouse,Rat

#### CloneNo number

ARC50531

### Background

This gene encodes a mitochondrial protein that contains a BH3 domain and acts as a pro-apoptotic factor. The encoded protein interacts with anti-apoptotic proteins, including the E1B 19 kDa protein and Bcl2. This gene is silenced in tumors by DNA methylation.

### Recommended Dilutions

**WB** 1:1000 - 1:4000

**IHC-P** 1:200 - 1:800

**ELISA** Recommended starting concentration is 1 µg/mL. Please optimize the concentration based on your specific assay requirements.

### Immunogen Information

#### Gene ID

664

#### Swiss Prot

Q12983

#### Immunogen

Recombinant fusion protein containing a sequence corresponding to amino acids 40-120 of human BNIP3 (NP\_004043.3).

#### Synonyms

NIP3; HABON; BNIP3

### Contact



[www.abclonal.com](http://www.abclonal.com)

### Product Information

#### Source

Rabbit

#### Isotype

IgG

#### Purification

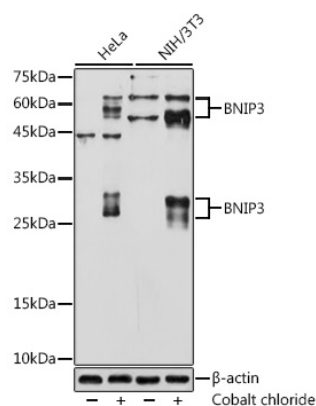
Affinity purification

#### Storage

Store at -20°C. Avoid freeze / thaw cycles.

Buffer: PBS with 0.05% proclin300,0.05% BSA,50% glycerol,pH7.3.

## Validation Data



Western blot analysis of various lysates using BNIP3 Rabbit mAb (A19593) at 1:1000 dilution. HeLa cells and NIH/3T3 cells were treated by Cobalt chloride (0.1 mM) at 37°C for 4 hours.

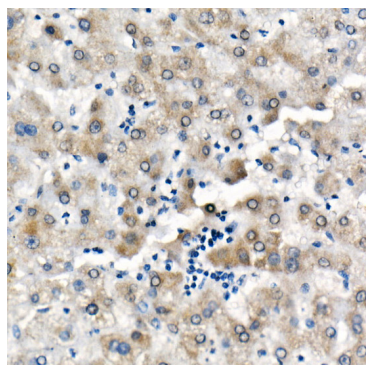
Secondary antibody: HRP-conjugated Goat anti-Rabbit IgG (H+L) (AS014) at 1:10000 dilution.

Lysates/proteins: 25 $\mu$ g per lane.

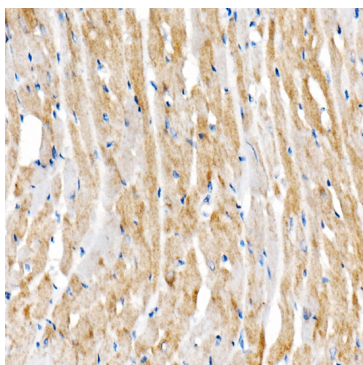
Blocking buffer: 3% nonfat dry milk in TBST.

Detection: ECL Basic Kit (RM00020).

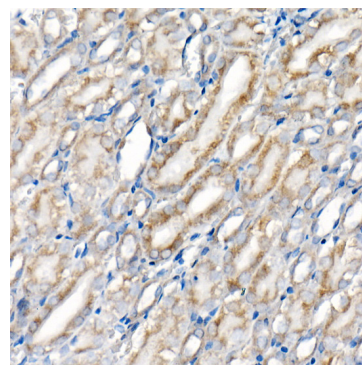
Exposure time: 30s.



Immunohistochemistry analysis of paraffin-embedded Human liver using BNIP3 Rabbit mAb (A19593) at dilution of 1:500 (40x lens). High pressure antigen retrieval performed with 0.01M Citrate Bufferr (pH 6.0) prior to IHC staining.



Immunohistochemistry analysis of paraffin-embedded Rat heart using BNIP3 Rabbit mAb (A19593) at dilution of 1:500 (40x lens). High pressure antigen retrieval performed with 0.01M Citrate Bufferr (pH 6.0) prior to IHC staining.



Immunohistochemistry analysis of paraffin-embedded Rat kidney using BNIP3 Rabbit mAb (A19593) at dilution of 1:500 (40x lens). High pressure antigen retrieval performed with 0.01M Citrate Bufferr (pH 6.0) prior to IHC staining.