

A19468

Leader in Biomolecular Solutions for Life Science



## PPP6R1 Rabbit pAb

Catalog No.: A19468

### Basic Information

**Observed MW**

127kDa

**Calculated MW**

97kDa

**Category**

Polyclonal Antibody

**Applications**

WB

**Cross-Reactivity**

Human, Mouse

### Background

Protein phosphatase regulatory subunits, such as SAPS1, modulate the activity of protein phosphatase catalytic subunits by restricting substrate specificity, recruiting substrates, and determining the intracellular localization of the holoenzyme. SAPS1 is a regulatory subunit for the protein phosphatase-6 catalytic subunit (PPP6C; MIM 612725) (Stefansson and Brautigan, 2006 [PubMed 16769727]).

### Recommended Dilutions

WB 1:500 - 1:1000

### Immunogen Information

**Gene ID**

22870

**Swiss Prot**

Q9UPN7

**Immunogen**

Synthetic peptide. This information is considered to be commercially sensitive.

**Synonyms**

PP6R1; SAPS1; SAP190; KIAA1115; PPP6R1

### Contact



[www.abclonal.com](http://www.abclonal.com)

### Product Information

**Source**

Rabbit

**Isotype**

IgG

**Purification**

Affinity purification

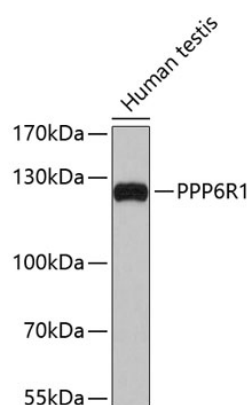
**Storage**

Store at 4°C. Avoid freeze / thaw cycles.

Buffer: PBS with 0.02% sodium azide, pH 7.3.

## Validation Data

---



Western blot analysis of lysates from human testis, using PPP6R1 Rabbit pAb (A19468).  
Secondary antibody: HRP-conjugated Goat anti-Rabbit IgG (H+L) (AS014) at 1:10000 dilution.

Lysates/proteins: 25µg per lane.

Blocking buffer: 3% nonfat dry milk in TBST.